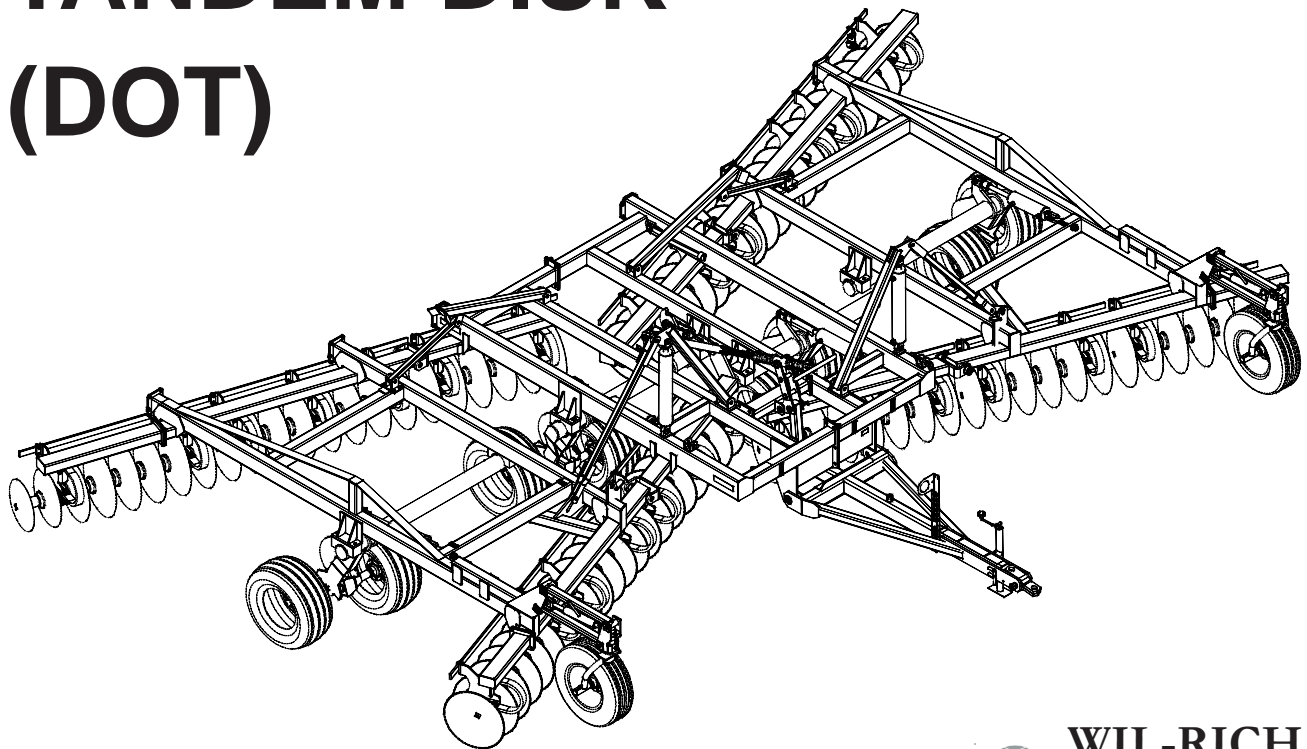




7650 PARTS MANUAL

DOUBLE OFFSET TANDEM DISK (DOT)



WIL-RICH

PO Box 1030
Wahpeton, ND 58074
PH (701) 642-2621
Fax (701) 642-3372
www.wil-rich.com

WARRANTY

The only warranty Wil-Rich gives and the only warranty the dealer is authorized to give is as follows:

We warrant products sold by us to be in accordance with our published specifications or those specifications agreed to by us in writing at time of sale. Our obligation and liability under this warranty is expressly limited to repairing, or replacing, at our option, within 12 months after date of retail delivery, any product not meeting the specifications. ***We make no other warranty, express or implied and make no warranty of merchantability or of fitness for any particular purpose.*** Our obligation under the warranty shall not include any transportation charges or costs or installation or any liability for direct, indirect or consequential damage or delay. If requested by us, products or parts for which a warranty claim is made are to be returned transportation prepaid to our factory. Any improper use, operation beyond rated capacity, substitution of parts not approved by us, or any alteration or repair by others in such manner as in our judgment affects the product materially and adversely shall void this warranty. ***No employee or representative is authorized to change this warranty in any way or grant any other warranty.***

Wil-Rich reserves the right to make improvement changes on any of our products without notice.

When warranty limited or not applicable: Warranty on hoses, cylinders, hubs, spindles, engines, valves, pumps or other trade accessories are limited to the warranties made by the respective manufactures of these components. Rubber tires and tubes are warranted directly by the respective tire manufacturer only, and not by Wil-Rich.

Warranty does not apply to any machine or part which has been repaired or altered in any way so as in the our judgment to affect its reliability, or which has been subject to misuse, negligence or accident.

A Warranty Validation and Delivery Report Form must be filled out and received by Wil-Rich to initiate the warranty coverage.

WARRANTY CLAIMS PROCEDURE

1. The warranty form must be returned to Wil-Rich within fifteen (15) working days from the repair date.
2. Parts returned to Wil-Rich without authorization will be refused. The parts must be retained at the dealership for ninety (90) days after the claim has been filed. If the Service Department would like to inspect the parts, a packing slip will be mailed to the dealer. The packing slip must be returned with the parts. The parts must be returned prepaid within thirty (30) days of receiving authorization. After the parts are inspected and warranty is verified, credit for the return freight will be issued to the dealer.
3. Parts that will be scrapped at the dealership will be inspected by a Wil-Rich Sales Representative, District Sales Manager or Service Representative within the ninety (90) day retaining period.

Orientation

Any reference to left (L) or right (R) sides or components is to be understood as being viewed from behind the implement and looking forward.

Serial Number Break

Every implement has a serial number located on the frame. These serial numbers are consecutively assigned to the implements as they are manufactured. To aid in part ordering, we reference to the serial number at the point the change occurred to provide an accurate means of determining the proper parts.

Modifications

It is the policy of WIL-RICH Operations to improve its products whenever possible and practical to do so. We reserve the right to make changes, improvements, and modifications at any time without incurring the obligation to make such changes, improvements and modifications on any equipment sold previously.

Abbreviations

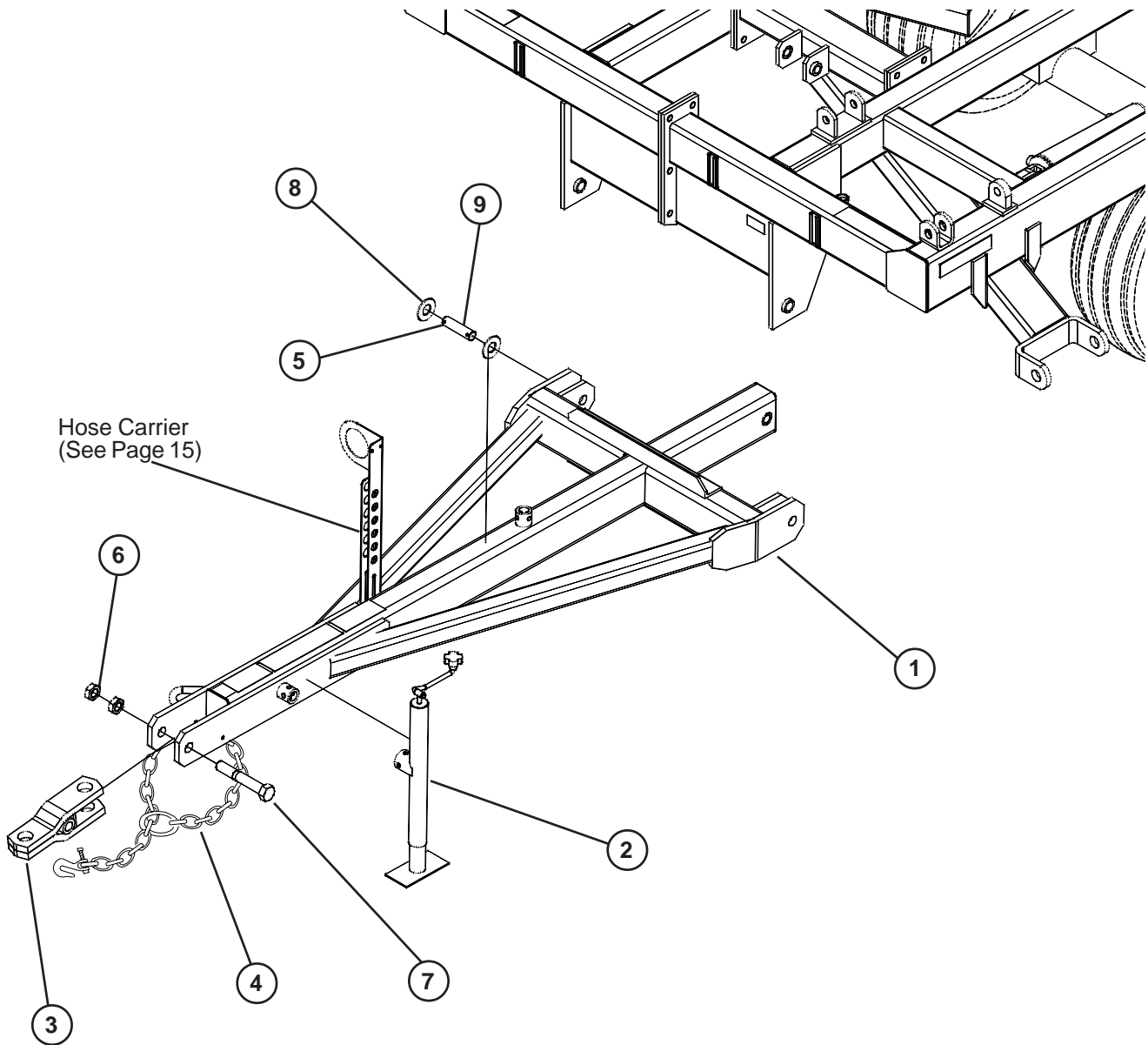
| | |
|------------|------------------------|
| ASSY | Assembly |
| BLD | Blade |
| BRKT | Bracket |
| CTR | Center |
| CP | Cup Point |
| (FF) | Female Female |
| GR | Grade of Bolt |
| HD | Heavy Duty |
| HDWE | Hardware |
| LH | Left Hand |
| (MF) | Male Female |
| MF | Main Frame |
| MTG | Mounting |
| NC | National Course Thread |
| NF | National Fine Thread |
| NPT | National Pipe Thread |
| RH | Right Hand |
| SS | Screw Stop |
| SST | Stainless Steel |
| TA | Tandem |
| TBP | Top Bypass |
| W/ | With |
| W/O | Without |

CONTENTS

| | |
|-----------------------------------|-------|
| HEAVY HITCH..... | 4-5 |
| MAIN FRAME | 6-7 |
| MAIN AXLE | 8-9 |
| WING FRAME..... | 10 |
| 6 BOLT HUB & 2” SPINDLE | 11 |
| 8 BOLT HUB & 2-1/2” SPINDLE | 12 |
| WALKING TANDEMS | 13 |
| LEVELLING SCREW | 14 |
| UTILITY POLE | 15 |
| WING FOLD LINKAGE | 16 |
| WING REST | 17 |
| DEPTH CONTROL HYDRAULICS | 18-19 |
| WING FOLD HYDRAULICS | 20 |
| CASTER GAUGE WHEEL | 21 |
| RIGID GAUGE WHEEL | 22 |
| 6 BOLT HUB & 1-3/4” SPINDLE | 23 |
| DISK GANG MOUNT | 24 |
| DISK GANG ASSEMBLY | 25 |
| BEARING ASSEMBLY | 26-27 |
| DISK SCRAPER ASSEMBLY | 26 |
| REAR HITCH | 28 |
| HARROW MOUNTING COMPONENTS | 29 |
| LIGHTS | 30 |
| DECALS | 31 |

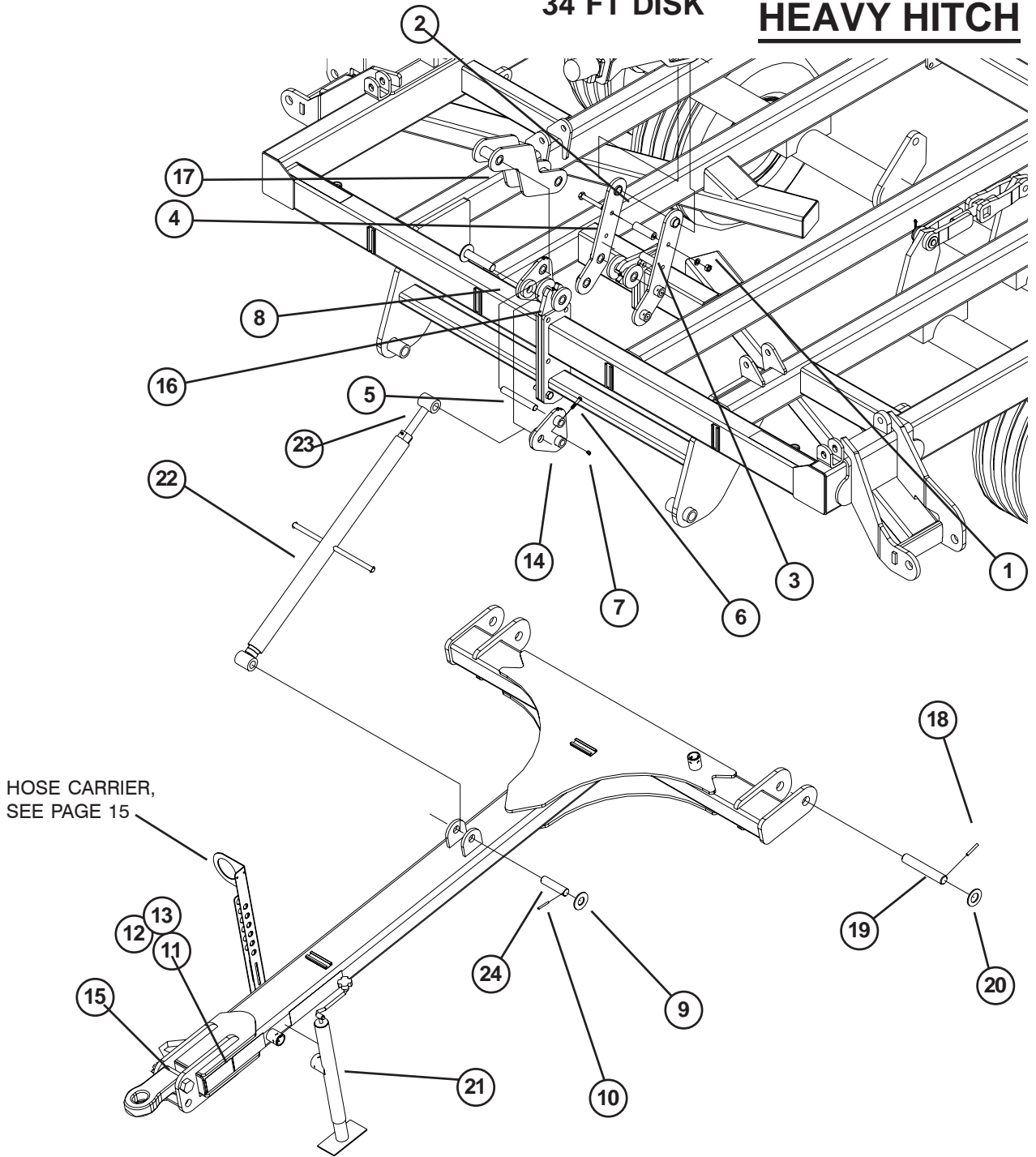
HEAVY HITCH

19-31FT DISK



| ITEM | PART NO. | DESCRIPTION |
|------|----------|-------------|
|------|----------|-------------|

| | | |
|---|--------|--------------------------|
| 1 | 235494 | HEAVY HITCH |
| 2 | 24415 | JACK |
| 3 | 24448 | CLEVIS HITCH |
| 4 | 24459 | 20K SAFETY CHAIN |
| 5 | 88601 | COTTER PIN 1/4x2-1/4 |
| 6 | 88622 | 1-1/4 JAM NUT |
| 7 | 243423 | 1-1/4x8 GR5 NC HEX BOLT |
| 8 | 88602 | 1-1/4 FLAT WASHER |
| 9 | 42431 | 1-1/4x3-3/4 HEADLESS PIN |

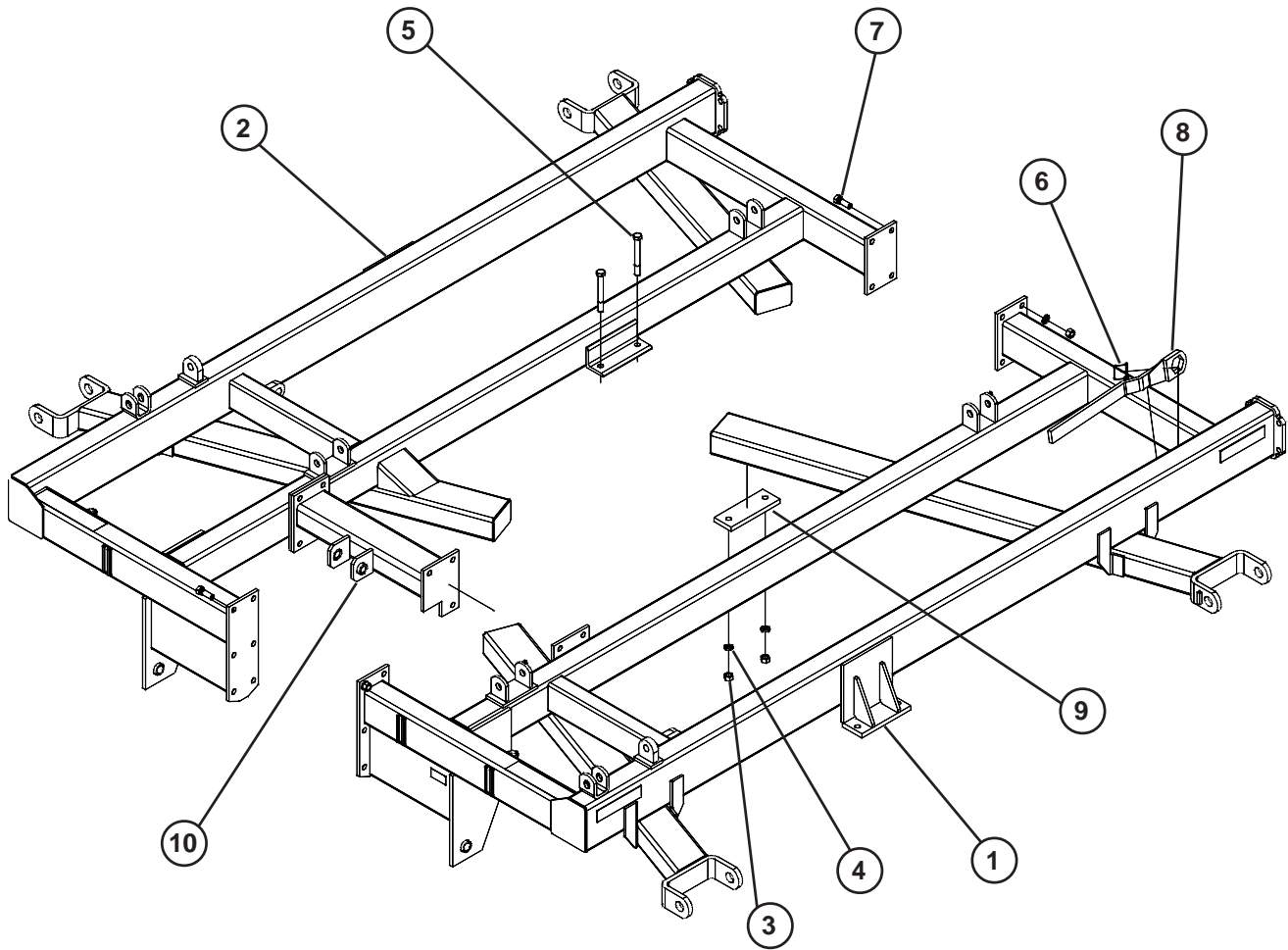


| ITEM | PART NO. | DESCRIPTION |
|------|----------|--------------------------|
| 1 | 240020 | LH LEVELLING PLATE |
| 2 | 240021 | RH LEVELLING PLATE |
| 3 | 240117 | 5/8X1-1/4X4-3/16 BUSHING |
| 4 | 88295 | 5/8NCX6 GR5 BOLT |
| 5 | 240130 | 1X6-1/4 PIN |
| 6 | 89012 | 3/8NCX2-1/2 GR5 BOLT |
| 7 | 88659 | 3/8NC TOP LOCK NUT |
| 8 | 240131 | 1-1/4X5-1/2 PIN |
| 9 | 88602 | 1-1/4 FLAT WASHER |
| 10 | 42484 | 1/4X 2-1/4 ROLL PIN |
| 11 | 243423 | 1-1/4NCX8 HITCH BOLT |
| 12 | 88350 | 1-1/4NC SLOTTED NUT |

| ITEM | PART NO. | DESCRIPTION |
|------|----------|-----------------------|
| 13 | 88133 | 3/16X2 COTTER PIN |
| 14 | 240018 | LH PLATE |
| 15 | 18236 | CAST DUAL HITCH |
| 16 | 240019 | RH PLATE |
| 17 | 240011 | LEVELING LINK |
| 18 | 88770 | 3/8X2-1/2 ROLL PIN |
| 19 | 65693 | 1-1/2X8-7/8 PIN |
| 20 | 88610 | 1-1/2 SAE FLAT WASHER |
| 21 | 24415 | JACK |
| 22 | 68036 | ADJUSTER ASSY |
| 23 | 68026 | ADJUSTMENT SCREW |
| 24 | 68031 | 1-1/4X5.12 PIN |

MAIN FRAME

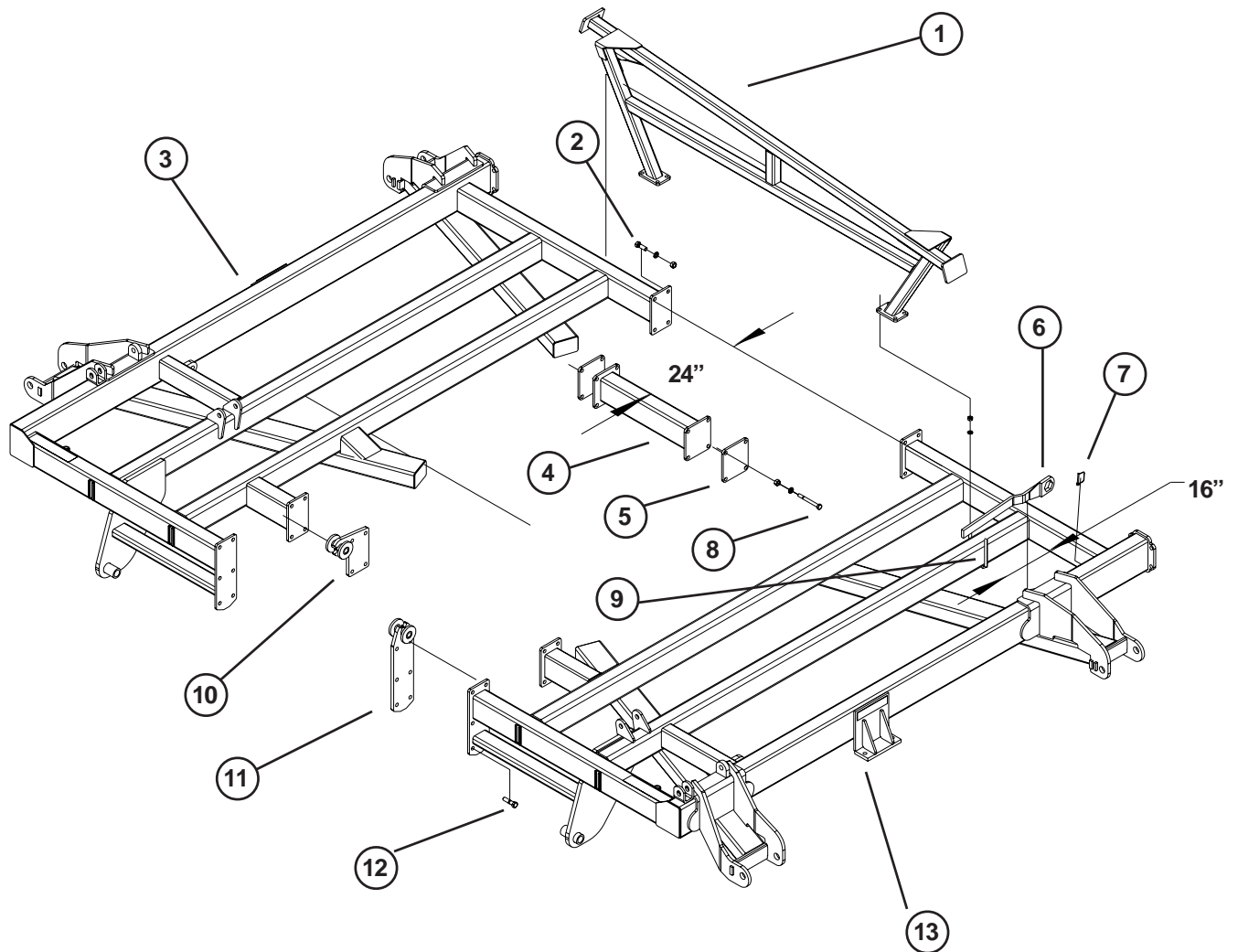
19-31FT DISK



| ITEM | PART NO. | DESCRIPTION |
|------|----------|----------------------------|
| 1 | 237212 | CENTER FRAME-LEFT |
| 2 | 237213 | CENTER FRAME-RIGHT |
| 3 | 88110 | NUT HEX 3/4"NC |
| 4 | 88130 | WSHR HLK 3/4ID(13/16ACT) Z |
| 5 | 88600 | 3/4"NCx6-1/2" GR8 HEX BOLT |
| 6 | 915402 | 5/16"x2-3/4" LYNCH PIN |
| 7 | 88578 | 3/4"NCx2-1/4" GR5 HEX BOLT |
| 8 | 24152 | GANG WRENCH |
| 9 | 24030 | INSIDE CLAMP PLATE |
| 10 | 24064 | MAIN CROSS MEMBER |

MAIN FRAME

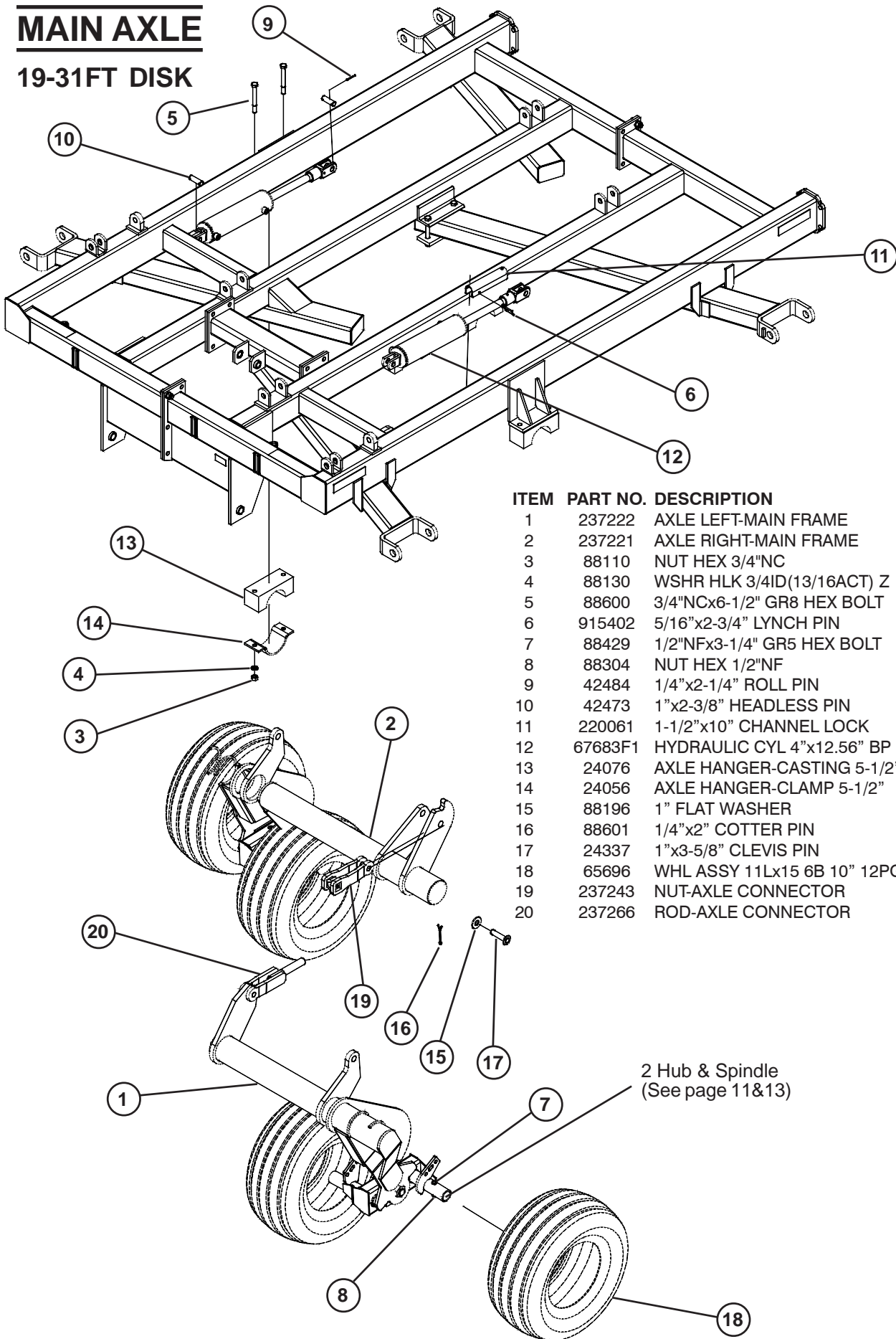
34 FT DISK



| ITEM | PART NO. | DESCRIPTION |
|------|----------|--------------------------|
| 1 | 240110 | DOT WING REST |
| 2 | 88578 | 3/4NCX2-1/4 GR5 BOLT |
| 3 | 239775 | RIGHT 7650 34FT CENTER |
| 4 | 240129 | 4X6X28 TUBE WELD |
| 5 | 240127 | 4HOLE PLATE(4-3/4X6) |
| 6 | 24152 | GANG WRENCH |
| 7 | 915402 | 5/6X2-3/4 LYNCH PIN |
| 8 | 88293 | 3/4NCX6 GR5 BOLT |
| 9 | 24178 | 5/8NCX4-1/8X7-3/8 U-BOLT |
| 10 | 240109 | REAR LEVELER PIVOT |
| 11 | 240114 | FRONT LEVELER PIVOT |
| 12 | 88291 | 3/4NCX3 GR5 BOLT |
| 13 | 239774 | LEFT 7650 34FT CENTER |

MAIN AXLE

19-31FT DISK

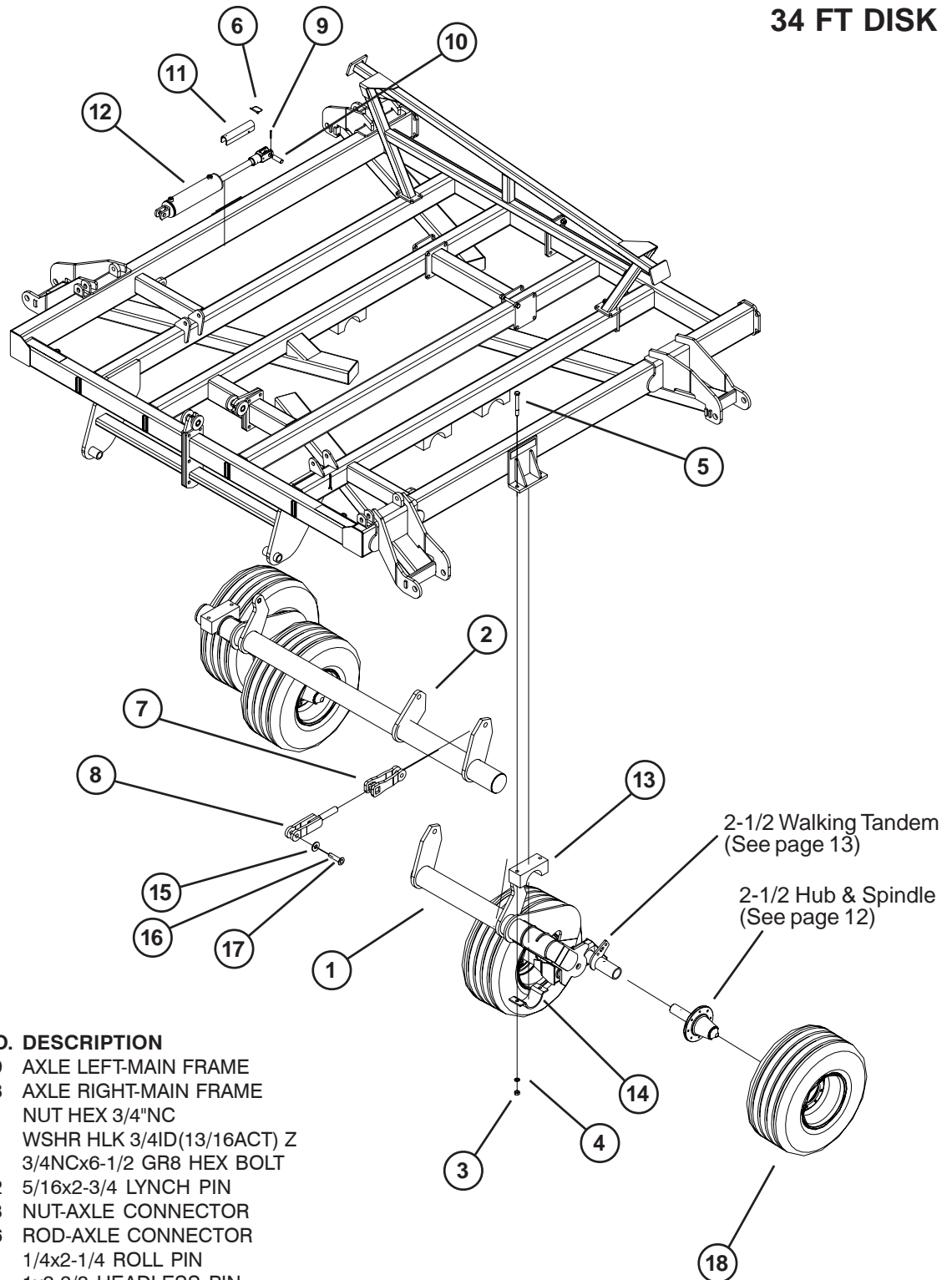


| ITEM | PART NO. | DESCRIPTION |
|------|----------|--------------------------------|
| 1 | 237222 | AXLE LEFT-MAIN FRAME |
| 2 | 237221 | AXLE RIGHT-MAIN FRAME |
| 3 | 88110 | NUT HEX 3/4"NC |
| 4 | 88130 | WSHR HLK 3/4ID(13/16ACT) Z |
| 5 | 88600 | 3/4"NCx6-1/2" GR8 HEX BOLT |
| 6 | 915402 | 5/16"x2-3/4" LYNCH PIN |
| 7 | 88429 | 1/2"NFx3-1/4" GR5 HEX BOLT |
| 8 | 88304 | NUT HEX 1/2"NF |
| 9 | 42484 | 1/4"x2-1/4" ROLL PIN |
| 10 | 42473 | 1"x2-3/8" HEADLESS PIN |
| 11 | 220061 | 1-1/2"x10" CHANNEL LOCK |
| 12 | 67683F1 | HYDRAULIC CYL 4"x12.56" BP |
| 13 | 24076 | AXLE HANGER-CASTING 5-1/2" |
| 14 | 24056 | AXLE HANGER-CLAMP 5-1/2" |
| 15 | 88196 | 1" FLAT WASHER |
| 16 | 88601 | 1/4"x2" COTTER PIN |
| 17 | 24337 | 1"x3-5/8" CLEVIS PIN |
| 18 | 65696 | WHL ASSY 11Lx15 6B 10" 12PGRAY |
| 19 | 237243 | NUT-AXLE CONNECTOR |
| 20 | 237266 | ROD-AXLE CONNECTOR |

2 Hub & Spindle
(See page 11&13)

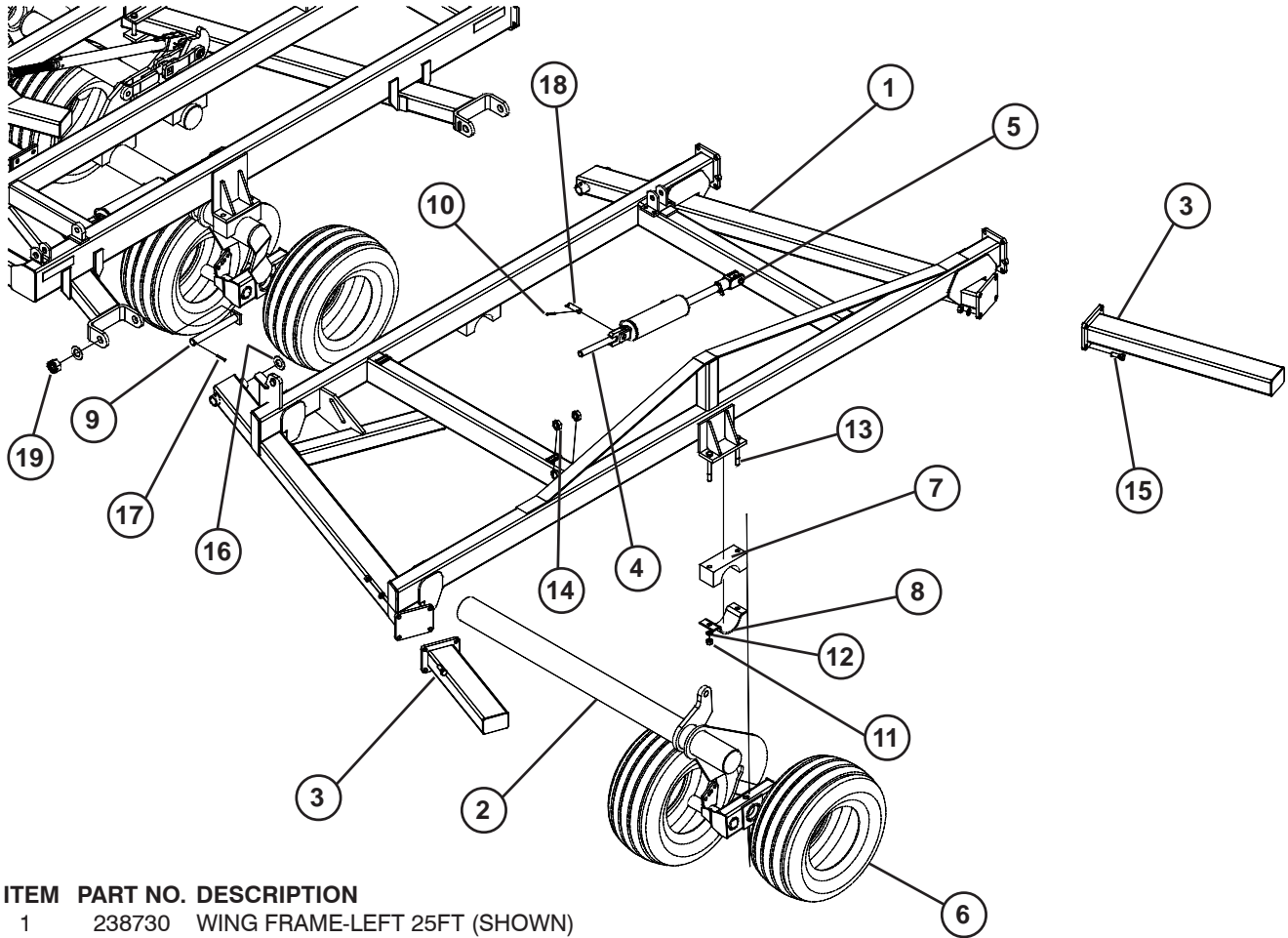
MAIN AXLE

34 FT DISK



| ITEM | PART NO. | DESCRIPTION |
|------|----------|-----------------------------|
| 1 | 240119 | AXLE LEFT-MAIN FRAME |
| 2 | 240118 | AXLE RIGHT-MAIN FRAME |
| 3 | 88110 | NUT HEX 3/4"NC |
| 4 | 88130 | WSHR HLK 3/4ID(13/16ACT) Z |
| 5 | 88600 | 3/4NCx6-1/2 GR8 HEX BOLT |
| 6 | 915402 | 5/16x2-3/4 LYNCH PIN |
| 7 | 237243 | NUT-AXLE CONNECTOR |
| 8 | 237266 | ROD-AXLE CONNECTOR |
| 9 | 42484 | 1/4x2-1/4 ROLL PIN |
| 10 | 42473 | 1x2-3/8 HEADLESS PIN |
| 11 | 220061 | 1-1/2x10 CHANNEL LOCK |
| 12 | 67683F1 | HYDRAULIC CYL 4x12.56 BP |
| 13 | 24076 | AXLE HANGER-CASTING 5-1/2 |
| 14 | 24056 | AXLE HANGER-CLAMP 5-1/2 |
| 15 | 88196 | 1 FLAT WASHER |
| 16 | 88601 | 1/4x2 COTTER PIN |
| 17 | 24337 | 1x3-5/8 CLEVIS PIN |
| 18 | 222259 | WHL ASSY 31x13.5 8B 12PGRAY |

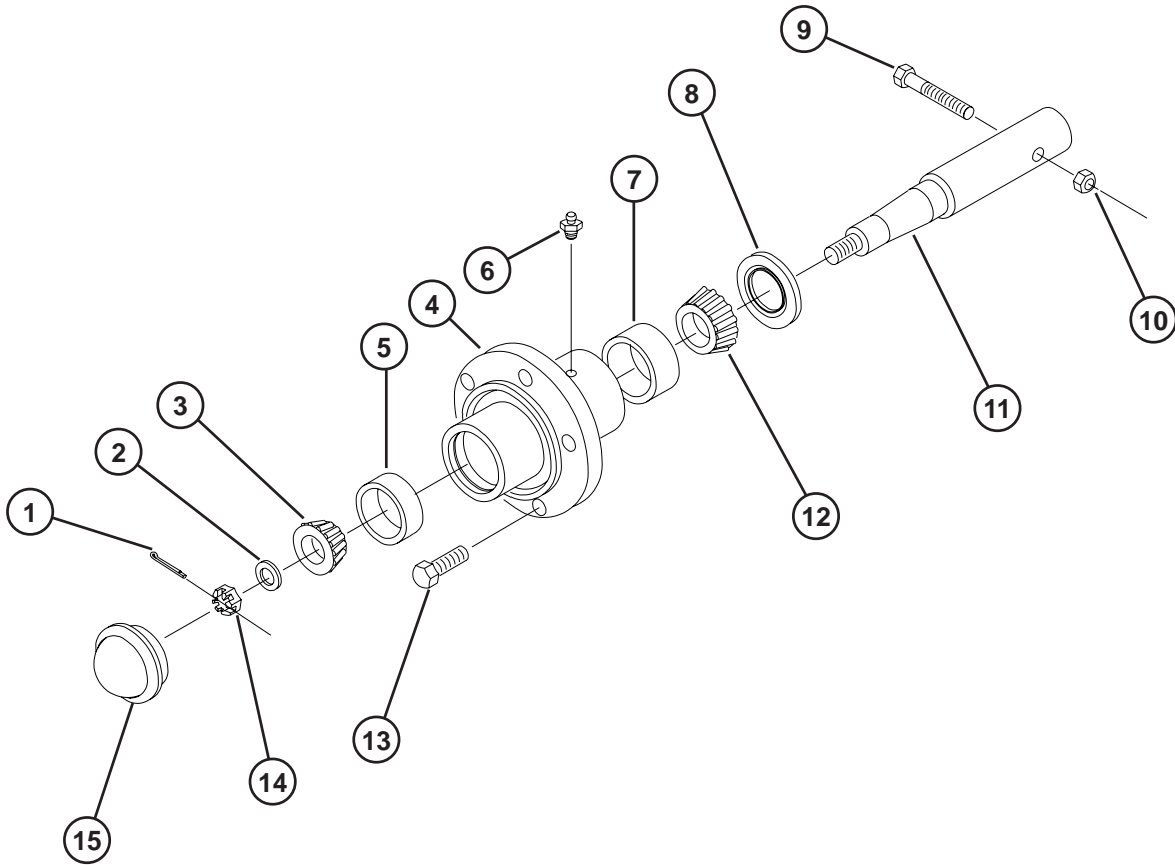
WING FRAME



| ITEM | PART NO. | DESCRIPTION |
|------|----------|------------------------------|
| 1 | 238730 | WING FRAME-LEFT 25FT (SHOWN) |
| | 238728 | WING FRAME-LEFT 28FT |
| | 237214 | WING FRAME-LEFT 31FT |
| | 238731 | WING FRAME-RIGHT 25FT |
| | 238729 | WING FRAME-RIGHT 28FT |
| | 237215 | WING FRAME-RIGHT 31FT |
| 2 | 238734 | WING AXLE-LEFT 25FT |
| | 238732 | WING AXLE-LEFT 28FT |
| | 237223 | WING AXLE-LEFT 31FT |
| | 238735 | WING AXLE-RIGHT 25FT |
| | 238733 | WING AXLE-RIGHT 28FT |
| | 237220 | WING AXLE-RIGHT 31FT |
| 3 | 238774 | WING FRAME EXTENSION 19" |
| | 237287 | WING FRAME EXTENSION 27" |
| | 237286 | WING FRAME EXTENSION 43" |
| 4 | 237232 | 1-1/4"NCx12" ADJ ROD |
| 5 | 67688F1 | HYDRAULIC CYL 4"x10.8" BP |
| 6 | 24538 | WHL ASSY 11Lx15 6B 8" 8PGRAY |
| 7 | 24076 | AXLE HANGER-CASTING 5-1/2" |
| 8 | 24056 | AXLE HANGER-CLAMP 5-1/2" |

| ITEM | PART NO. | DESCRIPTION |
|------|----------|----------------------------|
| 9 | 24388 | HINGE PIN 1-1/2"x12-1/4" |
| 10 | 42484 | ROLL PIN 1/4"x2-1/4" |
| 11 | 88110 | NUT HEX 3/4"NC |
| 12 | 88130 | WSHR HLK 3/4ID(13/16ACT) Z |
| 13 | 88600 | 3/4"NCx6-1/2" GR8 HEX BOLT |
| 14 | 88622 | 1-1/4" JAM NUT |
| 15 | 88578 | 3/4"NCx2-1/2" GR5 HEX BOLT |
| 16 | 88616 | 1-1/2" FLAT WASHER |
| 17 | 88605 | 5/16"x2-1/4" ROLL PIN |
| 18 | 42473 | 1"x2-3/8" HEADLESS PIN |
| 19 | 27761 | 1-1/2"NC HEX NUT SLOTTED |

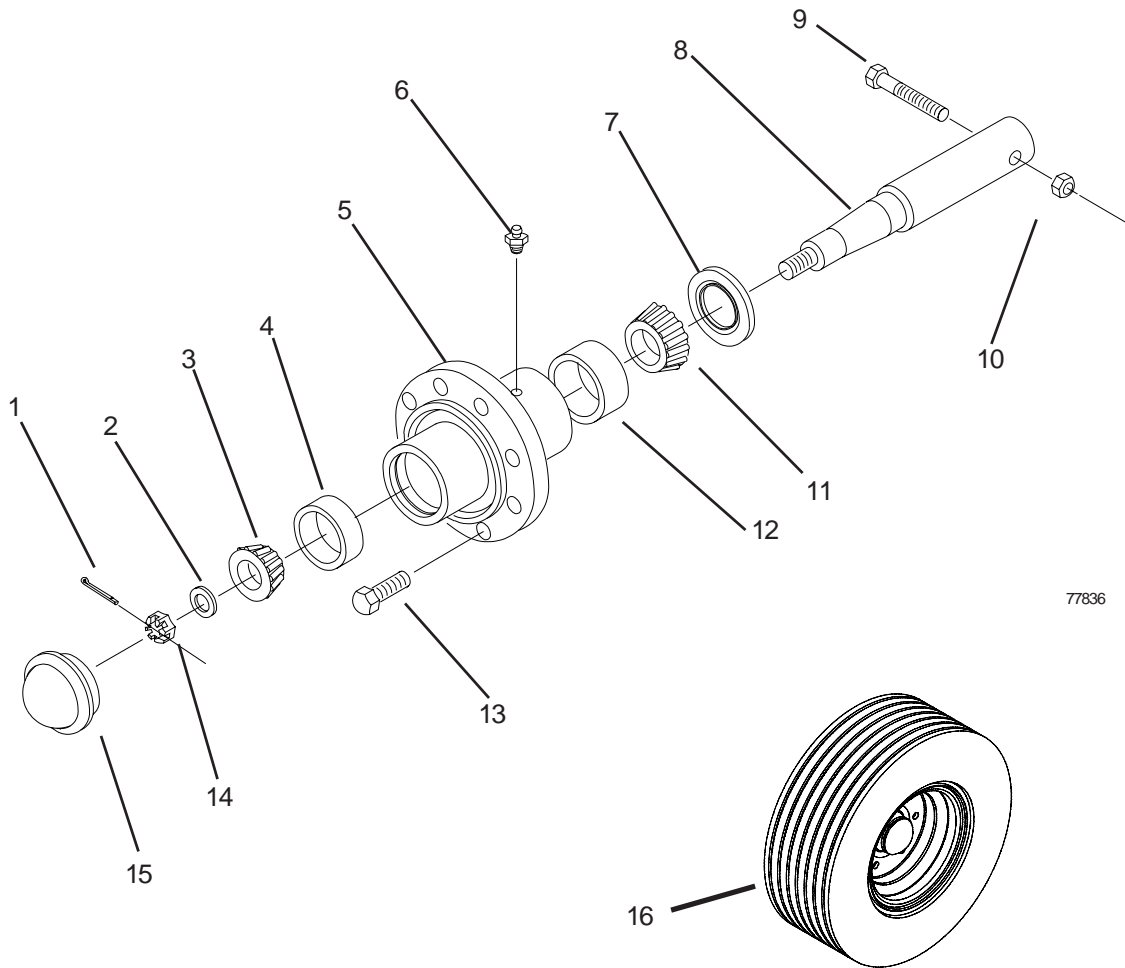
6-BOLT HUB & 2" SPINDLE



77836.PLT

| ITEM | PART NO. | DESCRIPTION |
|------|----------|--|
| | 14131 | 2" HUB & SPINDLE ASSY (INCLUDES 1- & 12-15) |
| 1 | 88301 | PIN COT 3/16DIAX1-1/2 |
| 2 | 16094 | SPINDLE WASHER 7/8ID |
| 3 | 10345 | BEARING CONE 1-1/4ID (LM67048) |
| 4 | 24097 | 6-BOLT HUB W/CUPS |
| 5 | 10344 | BEARING CUP 2.328 OD (LM67010) |
| 6 | 88263 | FTG GRS 1/8NPT 1610-BL(11/16") |
| 7 | 14249 | BEARING CUP 2.891 OD (LM501310) |
| 8 | 58546 | 2" TRIPLE LIP SEAL |
| 9 | 88429 | 1/2NFx3-1/4 GR5 BOLT |
| 10 | 88304 | NUT 2POSLK 1/2NF |
| 11 | 14251 | 2" AXLE SPINDLE |
| 12 | 14248 | BEARING CONE 1-5/8ID (LM501349) |
| 13 | 88142 | WHEEL BOLT 1/2NFx1 (13/16 HEAD) |
| 14 | 88340 | NUT SLTD 7/8NF |
| 15 | 11381 | DUST CAP |

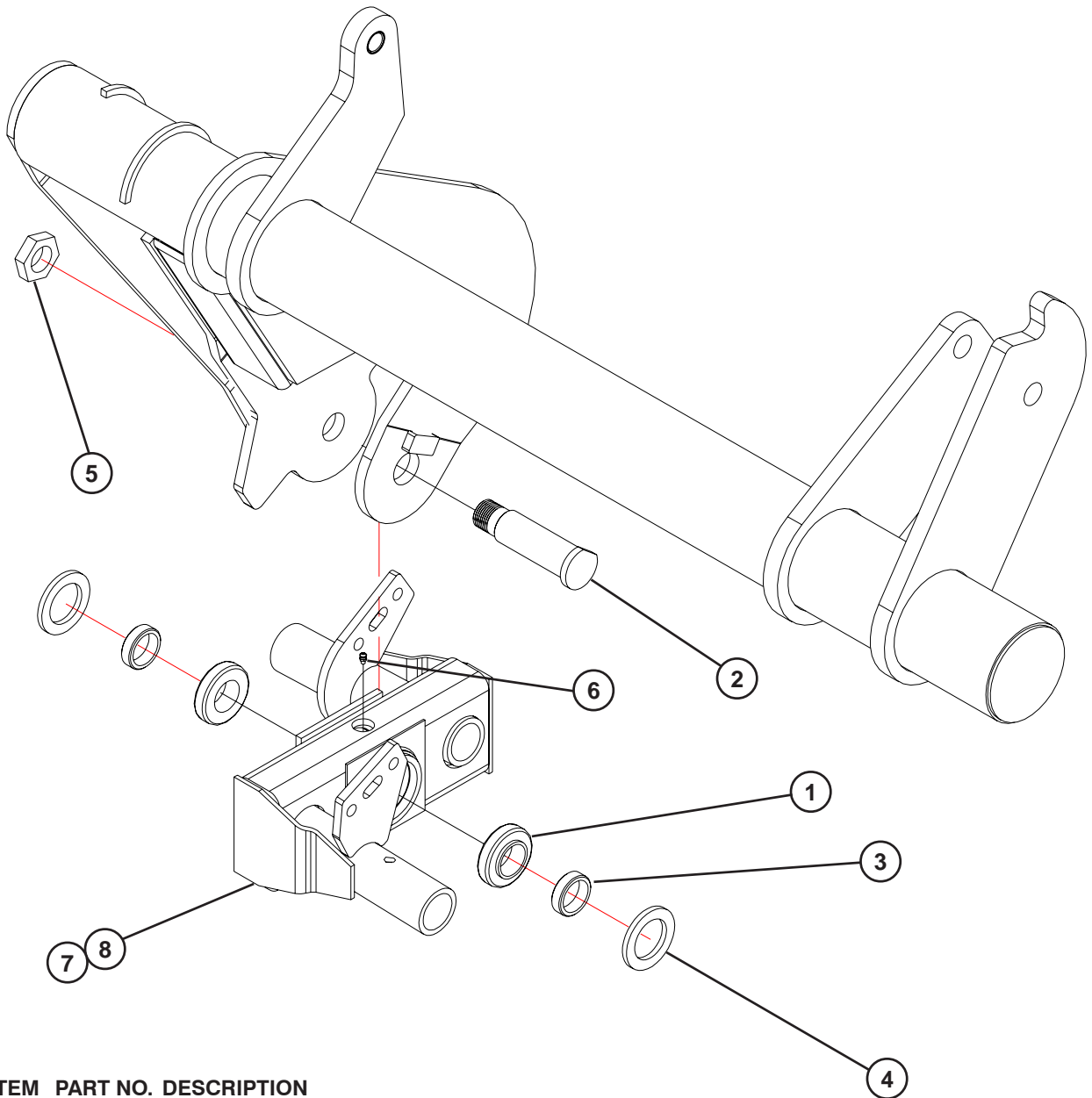
8-BOLT HUB & 2-1/2" SPINDLE



77836

| ITEM | PART NO | DESCRIPTION | ITEM | PART NO | DESCRIPTION |
|------|---------|--|------|---------|-------------------------------------|
| | 16154 | 8-BOLT HUB & SPINDLE (RED) (INCLUDES ITEMS 1-8 & 11-15) | 8 | 16156 | 2-1/2" AXLE SPINDLE (14-3/4) |
| 1 | 88301 | 3/16x1-1/2 COTTER PIN | 9 | 88298 | 5/8NCx4 GR5 BOLT |
| 2 | 64050 | 2-1/2ODx1-1/16ID SPINDLE WASHER | 10 | 88369 | 5/8NC LOCK NUT |
| 3 | 16081 | OUTER BEARING CONE (TIMKIN# 2790) | 11 | 16083 | INNER BEARING CONE (TIMKIN# 3780) |
| 4 | 16082 | OUTER BEARING CUP (TIMKIN# 2720) | 12 | 16084 | INNER BEARING CUP (TIMKIN# 3720) |
| 5 | 41054 | 8-BOLT PRESSED HUB (RED) (INCLUDES ITEMS 4, 6 & 12) | 13 | 63831 | 9/16NFx1-1/8 90° WHEEL BOLT |
| 6 | 88143 | 1/4NPT GREASE FITTING | 14 | 88299 | 1NF SLOTTED NUT |
| 7 | 16080 | 2-1/2" TRIPLE LIP SEAL (PRIOR 2003) | 15 | 16077 | DUST CAP |
| | 235298 | 2-1/2" TRIPLE LIP SEAL (2003 AND UP) | 16 | 222259 | 31x13.5 12 PLY 8 BOLT WHEEL ASSY |
| | | | | 203196 | 15x10 WHEEL RIM |
| | | | | 57908 | VALVE ASSEMBLY |
| | | | | 222088 | 31x13.5 12PLY TIRE |

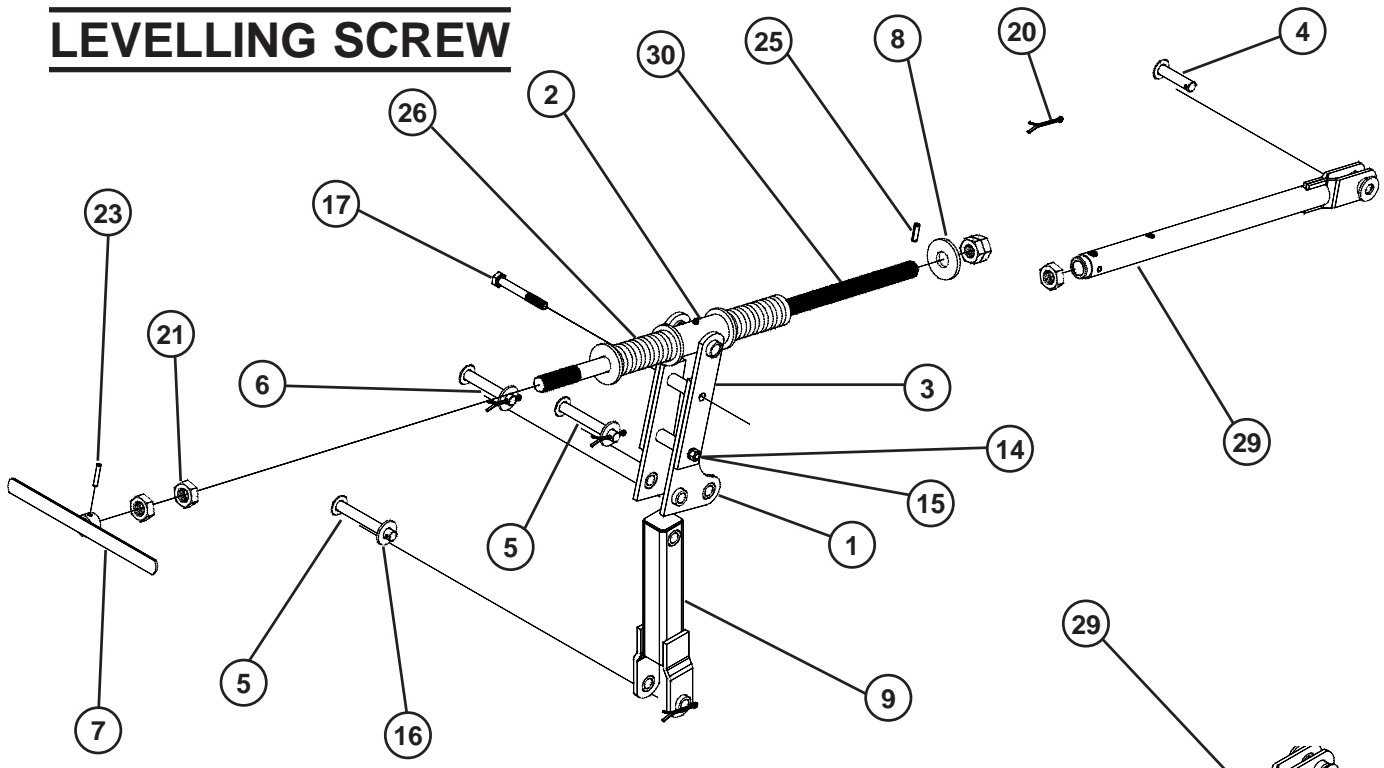
MAIN FRAME & WING TANDEM AXLE



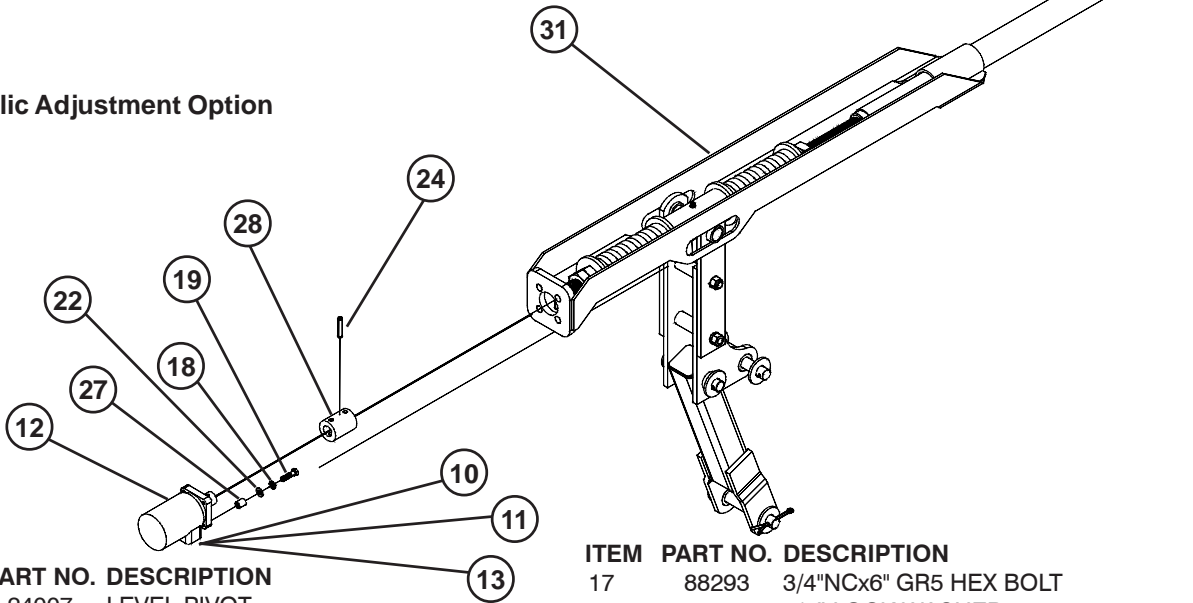
| ITEM | PART NO. | DESCRIPTION |
|------|----------|----------------------------------|
| 1 | 12103 | 1-3/4" BEARING CONE |
| 2 | 16277 | TANDEM PIN |
| 3 | 16278 | BEARING BUSHING |
| 4 | 23733 | BEARING SEAL |
| 5 | 42082 | 1-1/2"NF HYDRA JAM LK NUT |
| 6 | 88550 | GREASE ZERK |
| | | <u>2 INCH WALKING TANDEM</u> |
| 7 | 243408 | 3x6x11 RIGHT WALKER (SHOWN) |
| 8 | 243409 | 3x6x11 LEFT WALKER |
| | | <u>2-1/2 INCH WALKING TANDEM</u> |
| 7 | 243407 | 3X6X10 RIGHT WALKER (SHOWN) |
| 8 | 243406 | 3X6X10 LEFT WALKER |

700091

LEVELLING SCREW



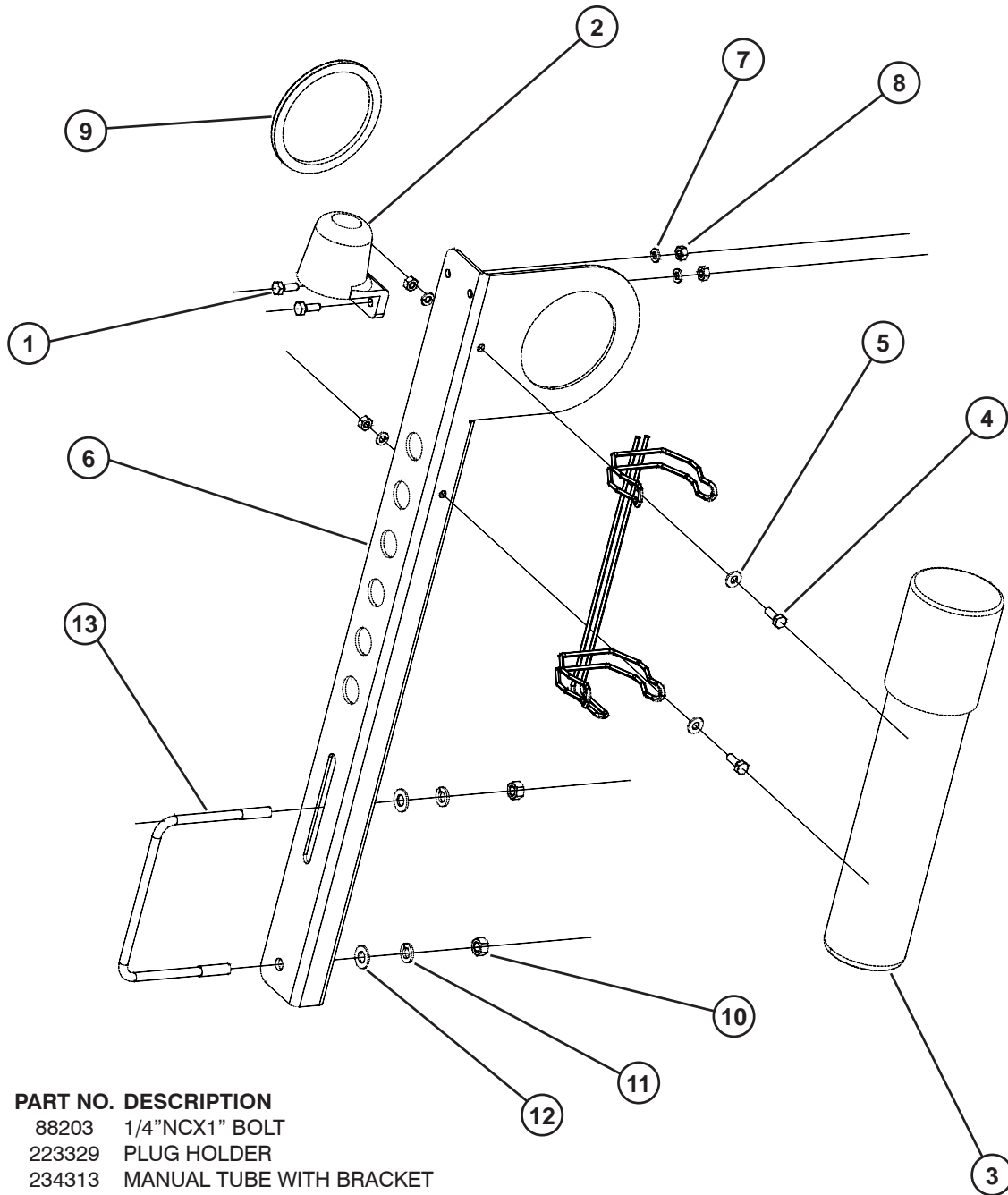
Hydraulic Adjustment Option



| ITEM | PART NO. | DESCRIPTION |
|------|----------|------------------------------------|
| 1 | 24007 | LEVEL PIVOT |
| 2 | 24070 | TRUNNION |
| 3 | 24130 | TRUNNION STRAPS |
| 4 | 24337 | CLEVIS PIN 1"x3-5/8" |
| 5 | 24338 | CLEVIS PIN 1"x6-3/4" |
| 6 | 24343 | CLEVIS PIN 1"x5-5/8" |
| 7 | 24404 | SCREW HANDLE |
| 8 | 24438 | WASHER-SPRING STOP |
| 9 | 24485 | 18.88" LEVELLING CONNECTOR (RED) |
| | 237071 | 20.88" LEVELLING CONNECTOR (BLACK) |
| 10 | 58690 | ADP 6MJ X 8MPT |
| 11 | 60640 | QUICK DISCONNECT COUPLER |
| 12 | 60649 | HYD MOTOR |
| 13 | 241817 | HSE 3KPSI 1/4" X 185" 6FJX-6FJX |
| 14 | 88110 | NUT HEX 3/4"NC |
| 15 | 88130 | WSHR HLK 3/4ID(13/16ACT) Z |
| 16 | 88196 | 1" FLAT WASHER |

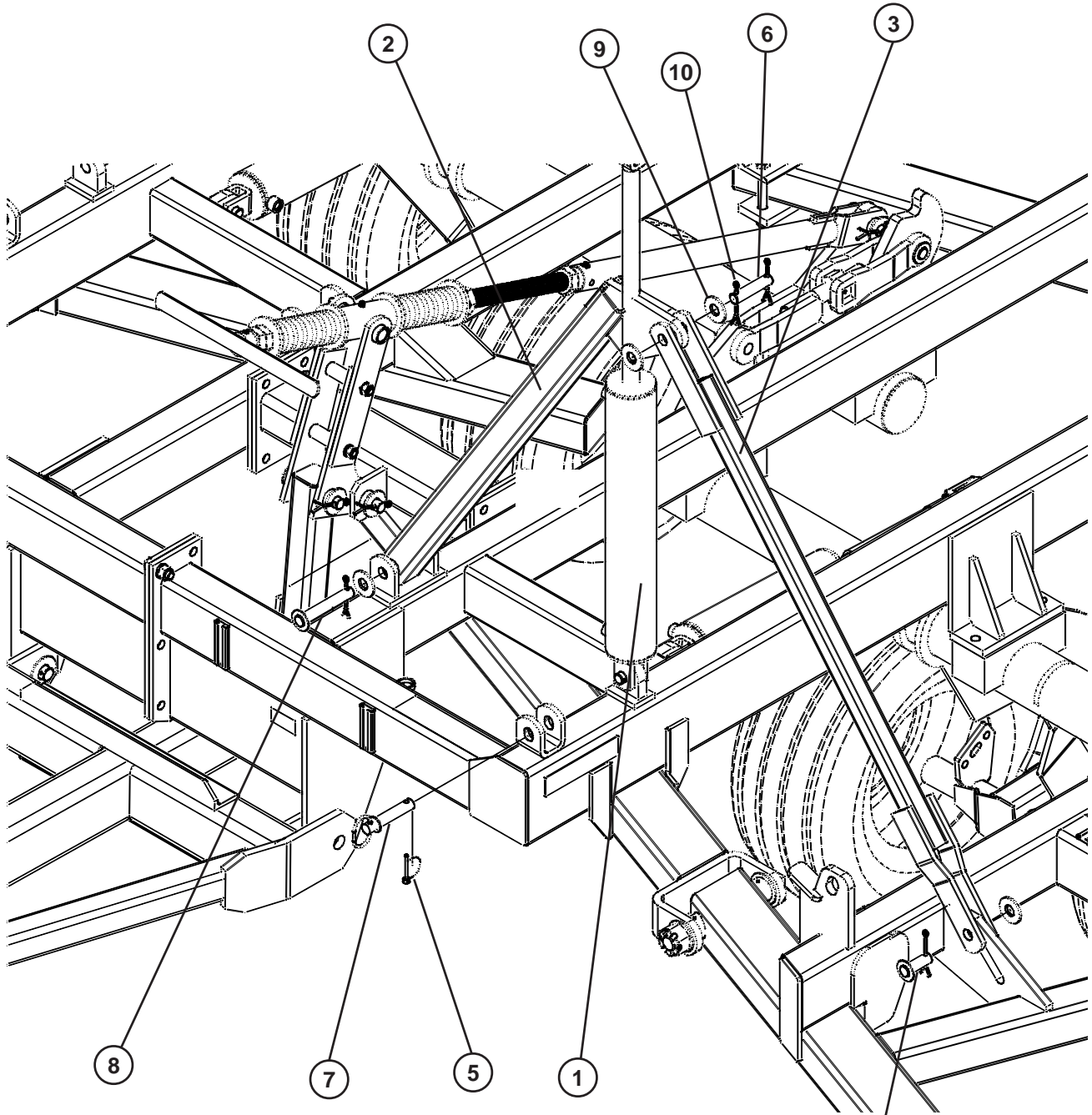
| ITEM | PART NO. | DESCRIPTION |
|------|----------|---------------------------------|
| 17 | 88293 | 3/4"NCx6" GR5 HEX BOLT |
| 18 | 88362 | 3/8" LOCK WASHER |
| 19 | 88553 | 3/8"NCx1-1/2" GD5 HEX BOLT |
| 20 | 88601 | COTTER PIN 1/4"x2.00" |
| 21 | 88623 | 1-1/2" JAM NUT |
| 22 | 88739 | 3/8" FLAT WASHER |
| 23 | 88764 | ROLL PIN 3/8"x2-1/4" |
| 24 | 88769 | ROLL PIN 3/8"x2" |
| 25 | 89426 | ROLL PIN 1/2"x1-3/4" |
| 26 | 139501C1 | COMPRESSION SPRING 11/16"x3"x8" |
| 27 | 223774 | 5/8" O.D. x 3/4" BUSHING |
| 28 | 223777 | 1" I.D. x 1-1/2" I.D. COUPLER |
| 29 | 237269 | ADJUSTMENT TUBE 38" |
| 30 | 237272 | 1-1/2" LEVEL SCREW 52" |
| 31 | 238709 | HYD LEVELLING ARM |

UTILITY POLE



| ITEM | PART NO. | DESCRIPTION |
|------|----------|--------------------------|
| 1 | 88203 | 1/4"NCX1" BOLT |
| 2 | 223329 | PLUG HOLDER |
| 3 | 234313 | MANUAL TUBE WITH BRACKET |
| 4 | 88993 | 1/4"NCX3/4" BOLT |
| 5 | 88261 | 1/4" FLAT WASHER |
| 6 | 236142 | HYD HOSE BRACKET |
| 7 | 88262 | 1/4" LOCK WASHER |
| 8 | 88172 | 1/4"NC HEX NUT |
| 9 | 236092 | RUBBER EDGE |
| 10 | 88103 | 3/8"NC HEX NUT |
| 11 | 88362 | 3/8" LOCK WASHER |
| 12 | 88282 | 3/8" FLAT WASHER |
| 13 | 89406 | 3/8"NCX6"X4-3/4" U-BOLT |

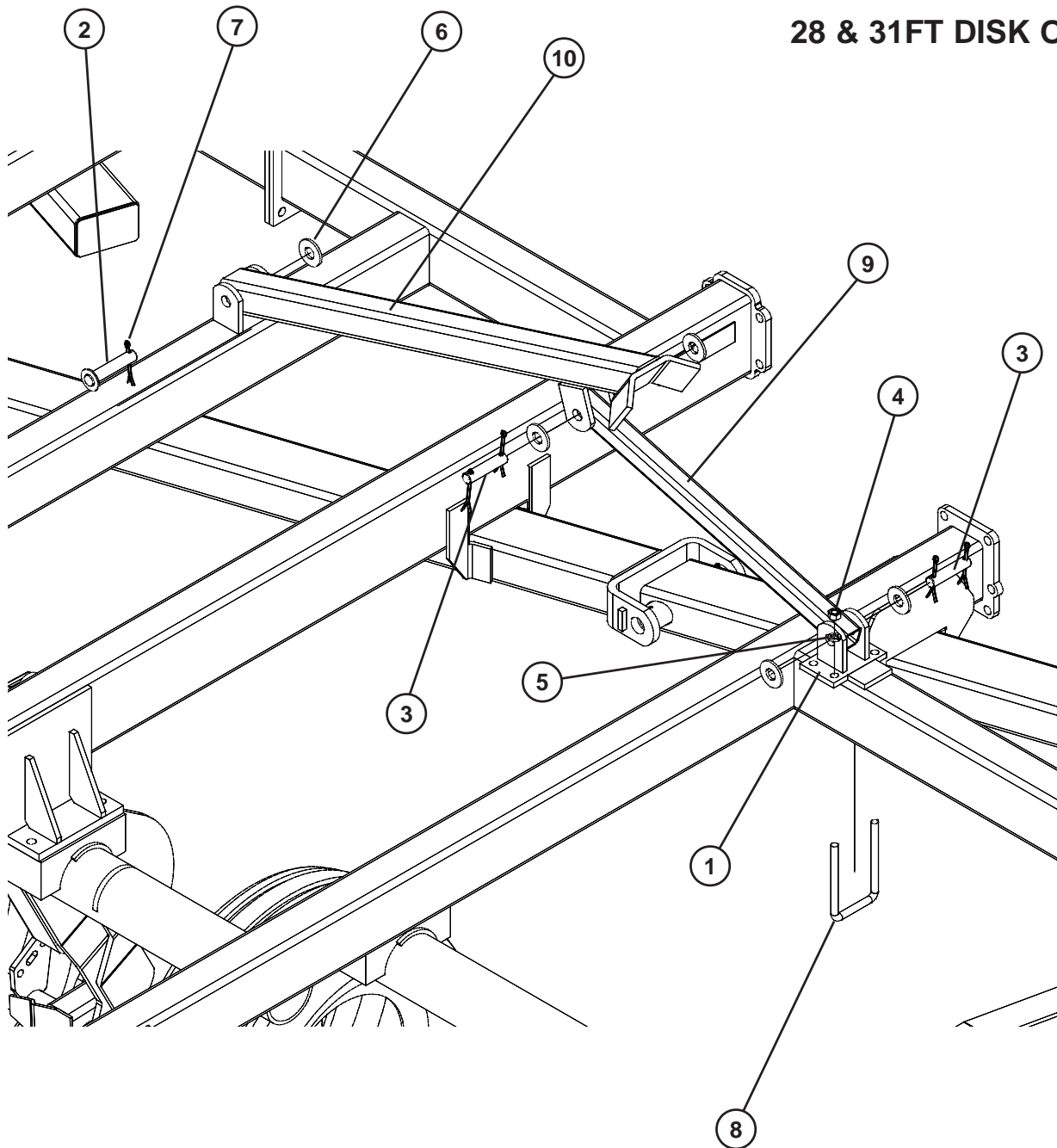
WING FOLD LINKAGE



| ITEM | PART NO. | DESCRIPTION |
|------|----------|---------------------------|
| 1 | 24676 | 4"x24" WING FOLD CYLINDER |
| 2 | 24446 | WING LIFT ARM |
| 3 | 237292 | LINKAGE TUBE |
| 4 | 24347 | CLEVIS PIN 1"x2-1/4" |
| 5 | 24212 | LYNCH PIN 1/4"x2" |
| 6 | 42430 | HEADLESS PIN 1"x3-7/16" |
| 7 | 24157 | HITCH PIN 1"x3-15/16" |
| 8 | 24343 | CLEVIS PIN 1"x5-5/8" |
| 9 | 88196 | 1" FLAT WASHER |
| 10 | 88601 | COTTER PIN 1/4"x2" |

WING REST

28 & 31FT DISK ONLY

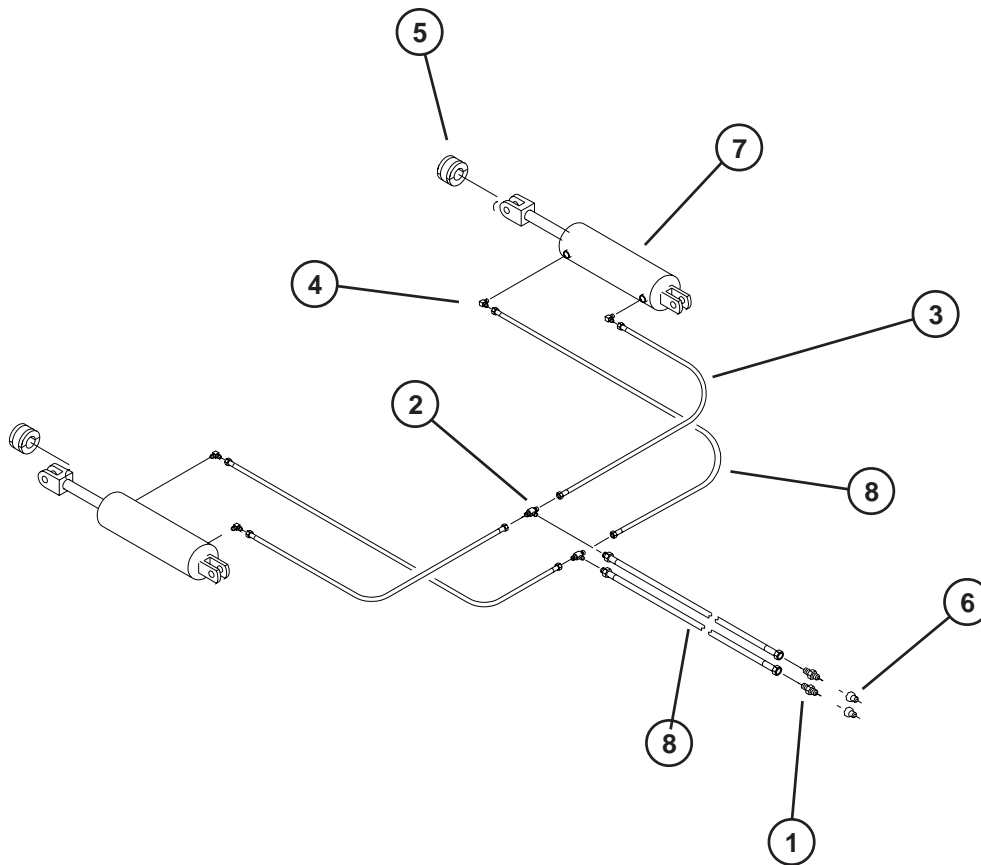


ITEM PART NO. DESCRIPTION

| | | |
|----|--------|-----------------------------|
| 1 | 24040 | MOUNTING BRACKET |
| 2 | 24335 | CLEVIS PIN 1"x4-1/2" |
| 3 | 42430 | HEADLESS PIN 1"x3-7/16" |
| 4 | 88126 | NUT HEX 5/8"NC |
| 5 | 88129 | WSHR HLK 5/8ID(11/16ACT) Z |
| 6 | 88196 | 1" FLAT WASHER |
| 7 | 88601 | COTTER PIN 1/4"x2" |
| 8 | 89097 | 5/8"NCx4"x7-1/4" GR5 U-BOLT |
| 9 | 237294 | LINKAGE TUBE |
| 10 | 237295 | REAR SUPPORT ARM |

DEPTH CONTROL HYDRAULICS

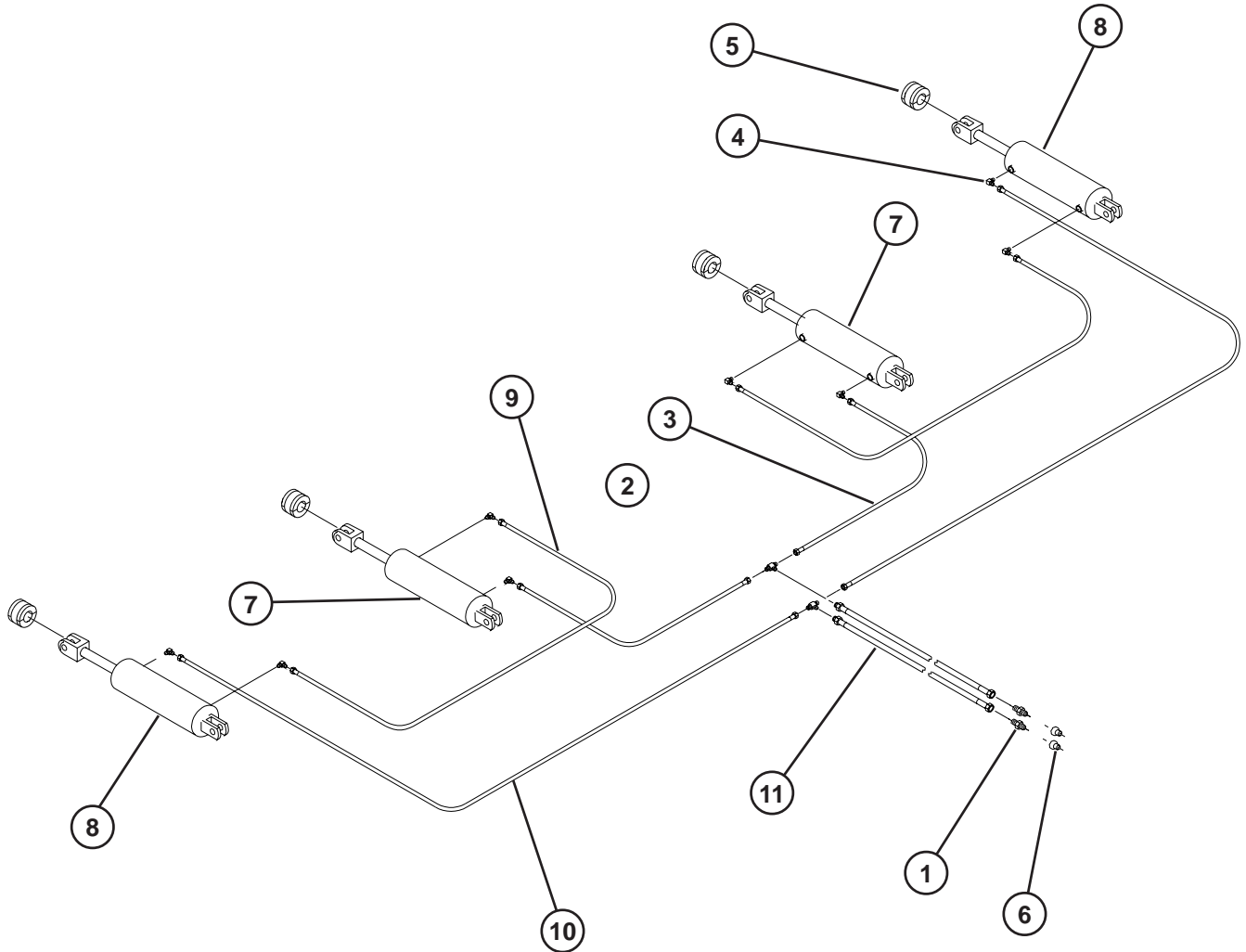
19-22 FT DISK



| ITEM | PART NO. | DESCRIPTION |
|------|----------|------------------------------|
| 1 | 13234 | ADP 8MJ X 8MPT |
| 2 | 13238 | TEE 8MJ X 8MJ X 8MJ |
| 3 | 13268 | HYD HOSE 3/8X78 8FJX-8FJX |
| 4 | 25580 | ELB 8MORB X 8MJ |
| 5 | 59185 | STOP PACKAGE 1-1/2" DIA |
| 6 | 60640 | QUICK DISCONNECT COUPLER |
| 7 | 67683F1 | HYD CYL 4"X12.6" BP |
| | 239904 | SEAL KIT |
| 8 | 235237 | HYD HOSE 1/2"x132" 8FJX-8FJX |
| 9 | 56540 | HYD HOSE 3/8X89 8FJX-8FJX |

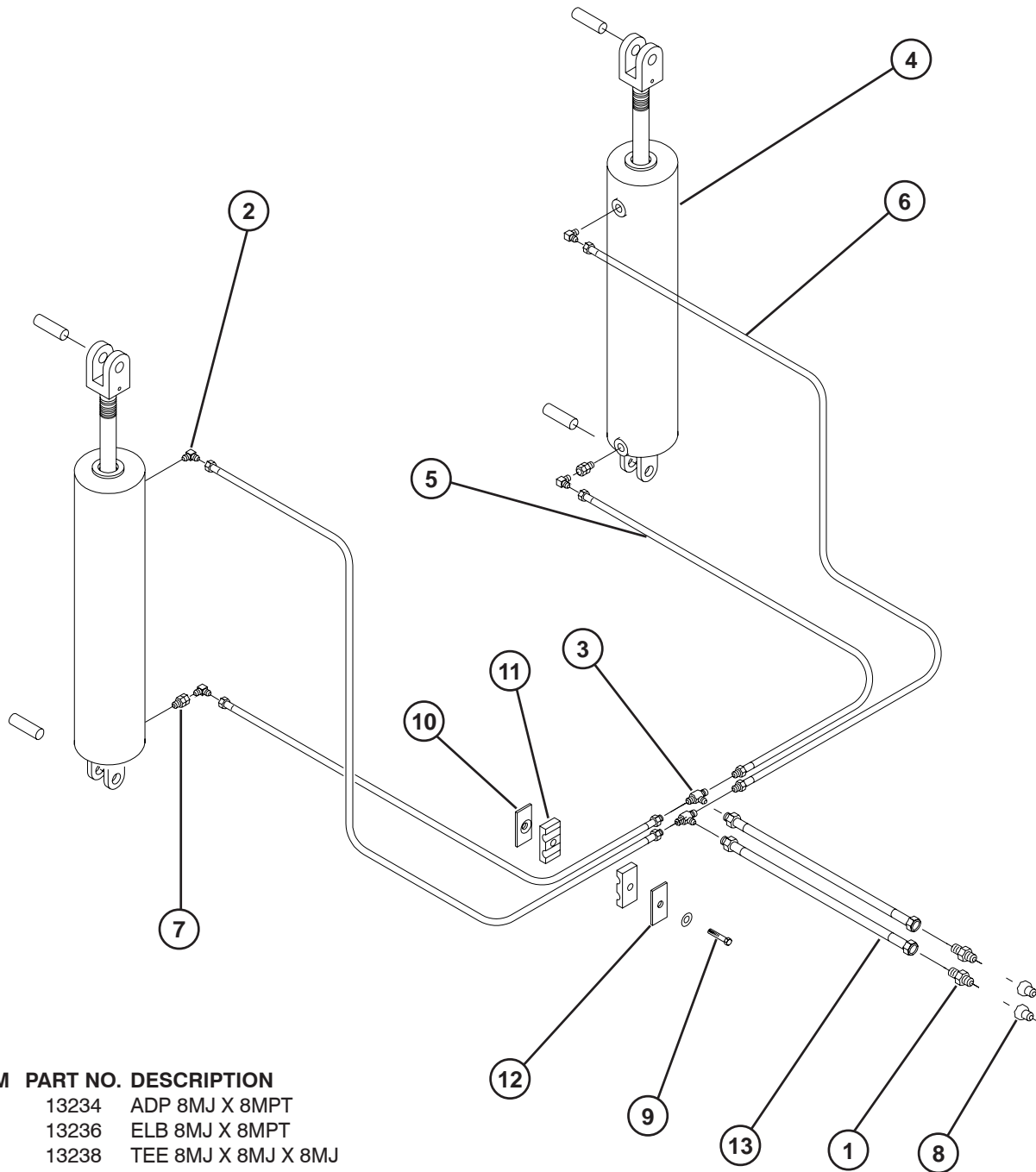
DEPTH CONTROL HYDRAULICS

25-34 FT DISK



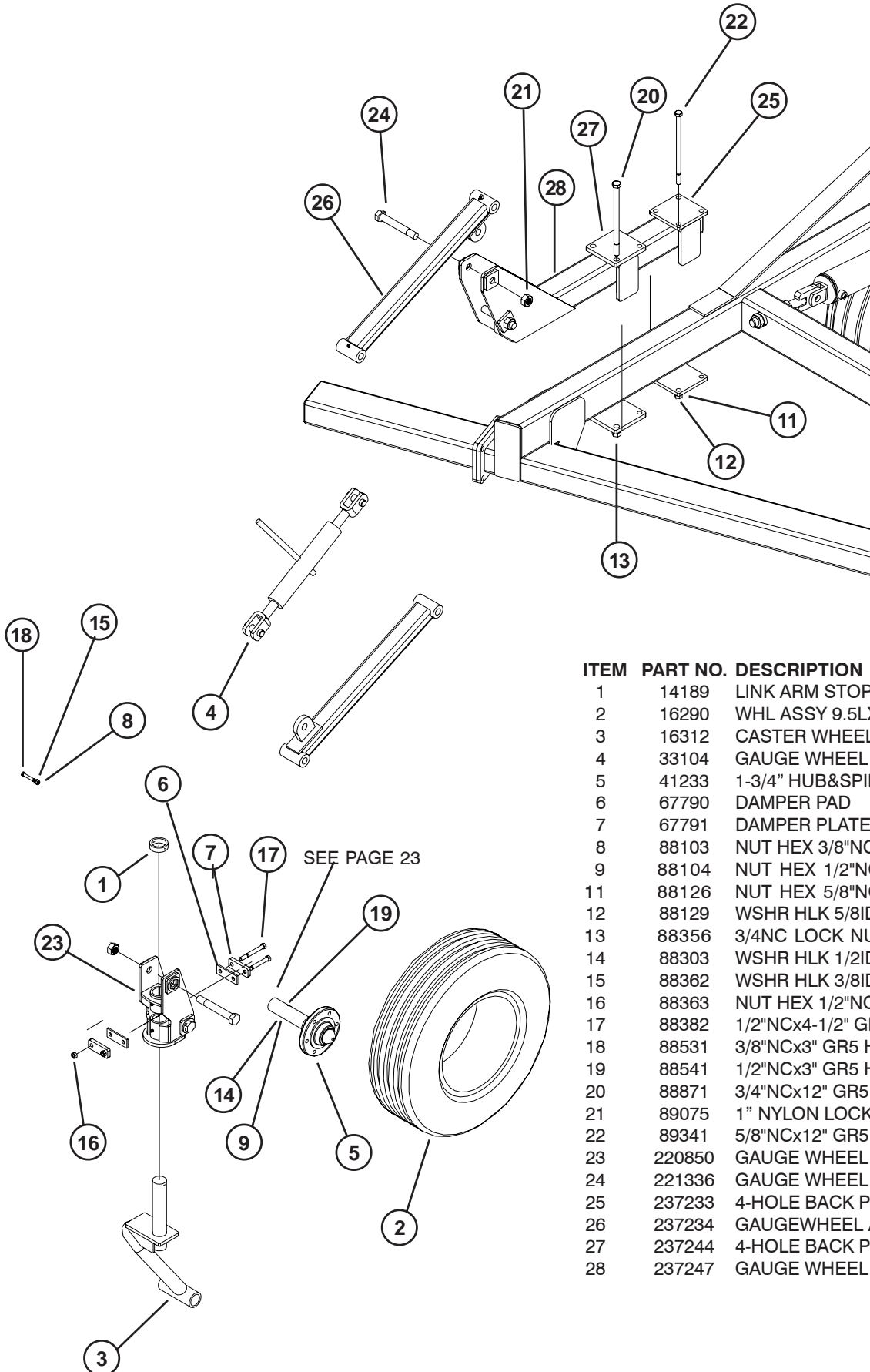
| ITEM | PART NO. | DESCRIPTION |
|------|----------|-------------------------------------|
| 1 | 13234 | ADP 8MJ X 8MPT |
| 2 | 13238 | TEE 8MJ X 8MJ X 8MJ |
| 3 | 13268 | HYD HOSE 3/8"x78" 8FJX-8FJX |
| 4 | 25580 | ELB 8MORB X 8MJ |
| 5 | 59185 | STOP PACKAGE 1-1/2" DIA |
| 6 | 60640 | QUICK DISCONNECT COUPLER |
| 7 | 67683F1 | HYD CYL 4"X12.6" BP |
| | 239904 | SEAL KIT |
| 8 | 67688F1 | HYD CYL 4"X10.8" BP |
| | 239904 | SEAL KIT |
| 9 | 13483 | HYD HOSE 3/8"x120" 8FJX-8FJX - 25FT |
| | 235386 | HYD HOSE 3/8"x137" 8FJX-8FJX - 28FT |
| | 13484 | HYD HOSE 3/8"x156" 8FJX-8FJX - 31FT |
| 10 | 13484 | HYD HOSE 3/8"x156" 8FJX-8FJX - 25FT |
| | 233689 | HYD HOSE 3/8"x180" 8FJX-8FJX - 28FT |
| | 234947 | HYD HOSE 3/8"x194" 8FJX-8FJX - 31FT |
| 11 | 235237 | HYD HOSE 1/2"x132" 8FJX-8FJX |

WING FOLD HYDRAULICS



| ITEM | PART NO. | DESCRIPTION |
|------|----------|------------------------------|
| 1 | 13234 | ADP 8MJ X 8MPT |
| 2 | 13236 | ELB 8MJ X 8MPT |
| 3 | 13238 | TEE 8MJ X 8MJ X 8MJ |
| 4 | 24676 | 4"x24" HYD CYLINDER |
| | 24549 | 4"x24" SEAL KIT |
| 5 | 25602 | HYD HOSE 3/8"x65" 8FJX-8FJX |
| 6 | 25604 | HYD HOSE 3/8"x83" 8FJX-8FJX |
| 7 | 31764 | 2-WAY SWIVEL RESTRICTOR |
| 8 | 60640 | QUICK DISCONNECT COUPLER |
| 9 | 88479 | 5/16"NCx1-1/2" GR5 HEX BOLT |
| 10 | 221443 | TWIN PLATE |
| 11 | 220645 | CLAMP HALF-3/8" TWIN |
| 12 | 221445 | COVER PLATE |
| 13 | 235237 | HYD HOSE 1/2"x132" 8FJX-8FJX |

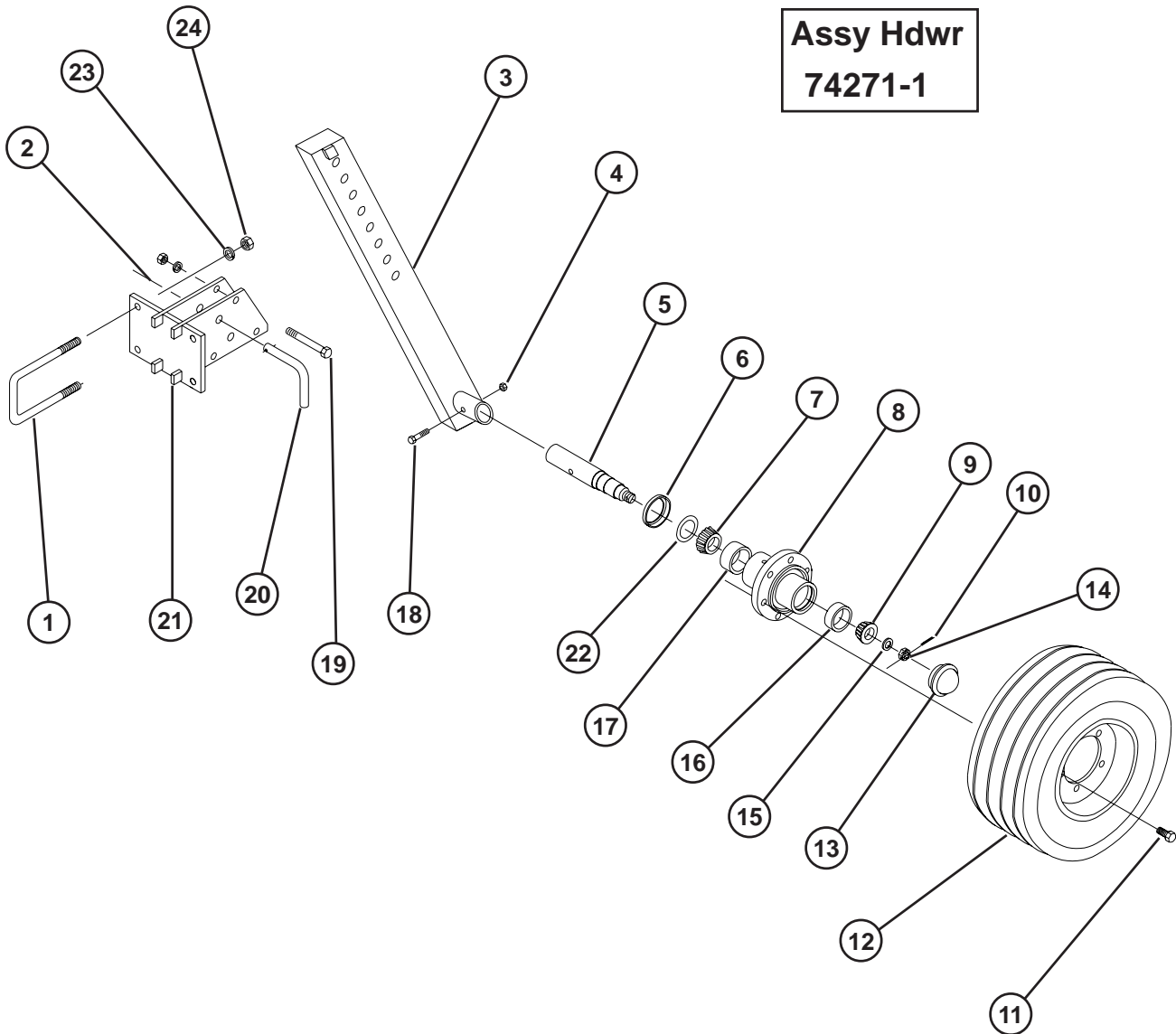
CASTER GAUGE WHEEL



| ITEM | PART NO. | DESCRIPTION |
|------|----------|-------------------------------|
| 1 | 14189 | LINK ARM STOP COLLAR |
| 2 | 16290 | WHL ASSY 9.5LX15 6B 8" 8PLY |
| 3 | 16312 | CASTER WHEEL LEG |
| 4 | 33104 | GAUGE WHEEL JACK |
| 5 | 41233 | 1-3/4" HUB&SPINDLE(LG8100001) |
| 6 | 67790 | DAMPER PAD |
| 7 | 67791 | DAMPER PLATE |
| 8 | 88103 | NUT HEX 3/8"NC |
| 9 | 88104 | NUT HEX 1/2"NC |
| 11 | 88126 | NUT HEX 5/8"NC |
| 12 | 88129 | WSHR HLK 5/8ID(11/16ACT) Z |
| 13 | 88356 | 3/4"NC LOCK NUT |
| 14 | 88303 | WSHR HLK 1/2ID(9/16ACT) Z |
| 15 | 88362 | WSHR HLK 3/8ID Z |
| 16 | 88363 | NUT HEX 1/2"NC 2POS LK |
| 17 | 88382 | 1/2"NCx4-1/2" GR5 HEX BOLT |
| 18 | 88531 | 3/8"NCx3" GR5 HEX BOLT |
| 19 | 88541 | 1/2"NCx3" GR5 HEX BOLT |
| 20 | 88871 | 3/4"NCx12" GR5 HEX BOLT |
| 21 | 89075 | 1" NYLON LOCK NUT |
| 22 | 89341 | 5/8"NCx12" GR5 HEX BOLT |
| 23 | 220850 | GAUGE WHEEL PIVOT |
| 24 | 221336 | GAUGE WHEEL PIVOT BOLT |
| 25 | 237233 | 4-HOLE BACK PLATE(4.62x4.62) |
| 26 | 237234 | GAUGE WHEEL ARM |
| 27 | 237244 | 4-HOLE BACK PLATE(4.62x4.69) |
| 28 | 237247 | GAUGE WHEEL MOUNT |

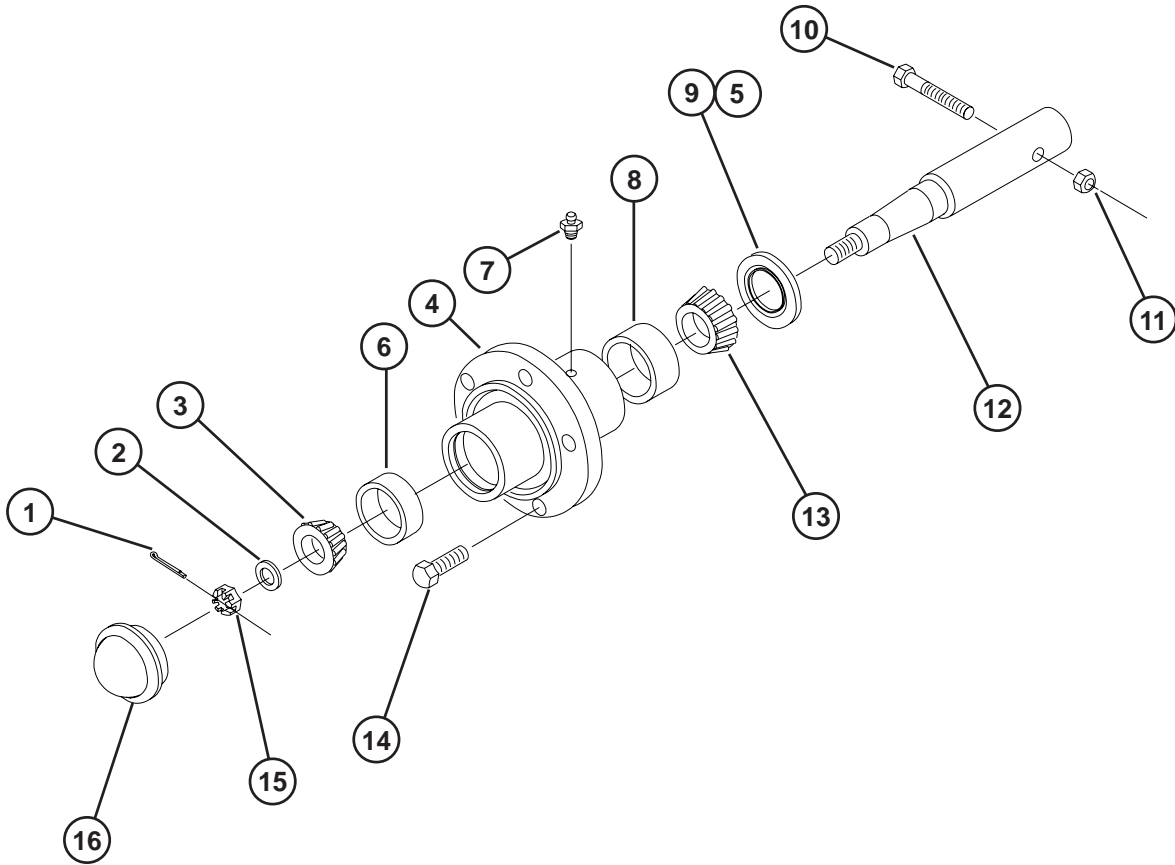
RIGID GAUGE WHEEL

Assy Hdw
74271-1



| ITEM | PART NO. | DESCRIPTION | ITEM | PART NO. | DESCRIPTION |
|------|----------|--|------|----------|-------------------------------|
| | 33100 | 1-3/4" HUB & SPINDLE ASSY (INCLUDES ITEMS 5-11&13-15) | 17 | 11379 | 2.56"OD BEARING CUP (LM29710) |
| 1 | 89097 | 5/8"NCx4"x7-1/4" U-BOLT | 18 | 88674 | 7/16"NCx2-3/4" GR5 BOLT |
| 2 | 23039 | HAIR PIN COTTER 2.69" | 19 | 88298 | 5/8"NCx4" GR5 BOLT |
| 3 | 66146 | GAUGE WHEEL LEG | 20 | 23096 | LOCK PIN 3/4"x3-19/32" |
| 4 | 88660 | 7/16"NC LOCK NUT | 21 | 234214 | GAUGE WHEEL MOUNT-LH |
| 5 | 41232 | 1-3/4" SPINDLE(LS7593F-04) | | 234215 | GAUGE WHEEL MOUNT-RH |
| 6 | 25585 | TRIPLE LIP SEAL | 22 | 25586 | WEAR SLEEVE |
| 7 | 11378 | 1-1/2" BORE BEARING CONE (LM29749) | 23 | 88126 | 5/8" NC HEX NUT |
| 8 | 30405 | 6-BOLT HUB W/CUPS (INCLUDES ITEMS 16, 17) | 24 | 88129 | 5/8" LOCK WASHER |
| 9 | 10345 | 1-1/4" BORE BEARING CONE (LM67048) | | | |
| 10 | 88601 | 5/32"x1-1/4" COTTER PIN | | | |
| 11 | 88142 | 1/2"NFx1" WHEEL BOLT | | | |
| 12 | 66145 | 20.5x10x8 10 PLY WHEEL ASSY | | | |
| 13 | 11381 | DUST CAP | | | |
| 14 | 88340 | 7/8"NF SLOTTED NUT | | | |
| 15 | 16094 | SPINDLE WASHER 7/8"ID | | | |
| 16 | 10344 | 2.32"OD BEARING CUP (LM64010) | | | |

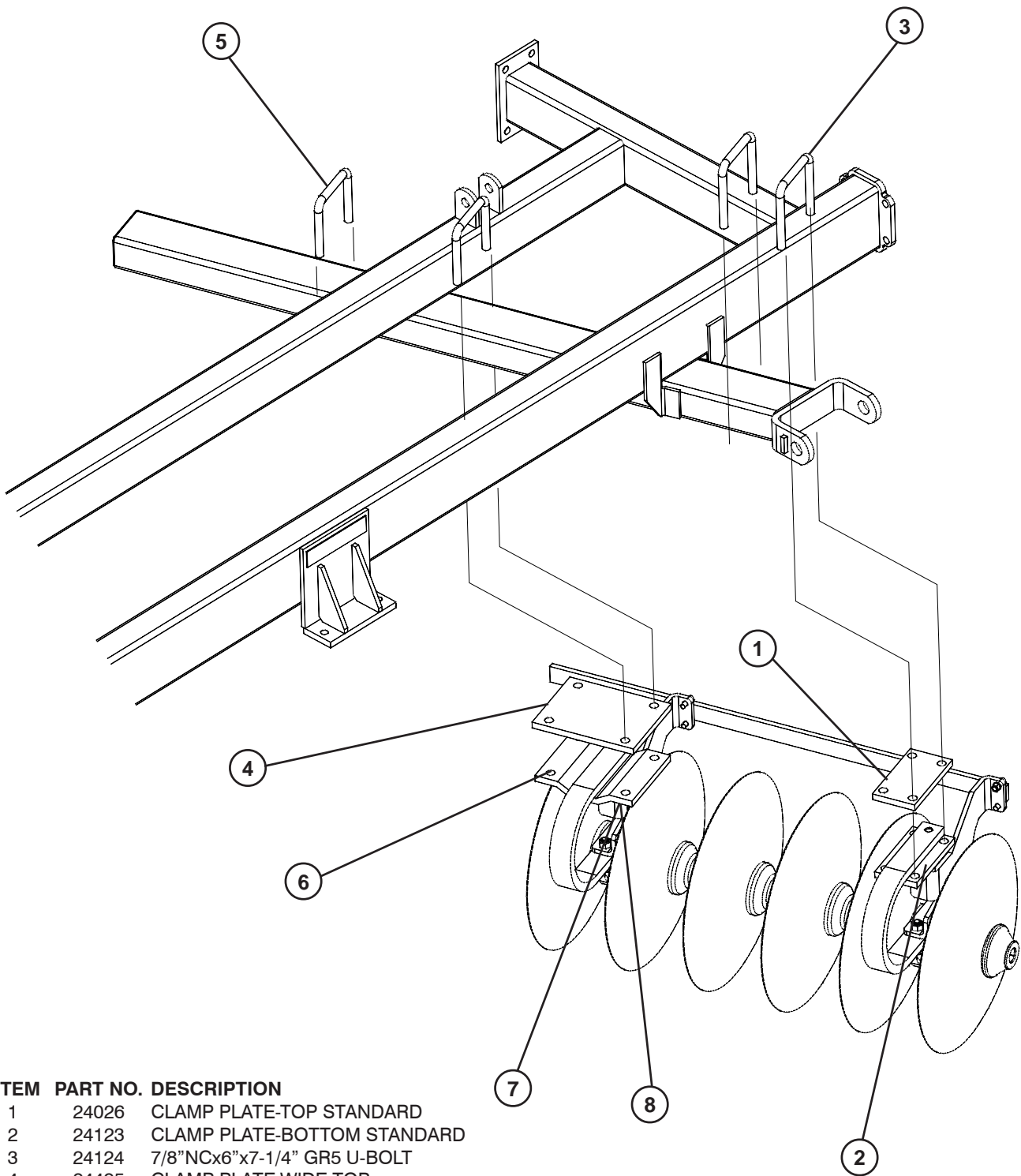
6-BOLT HUB & 1-3/4" SPINDLE



77836.PLT

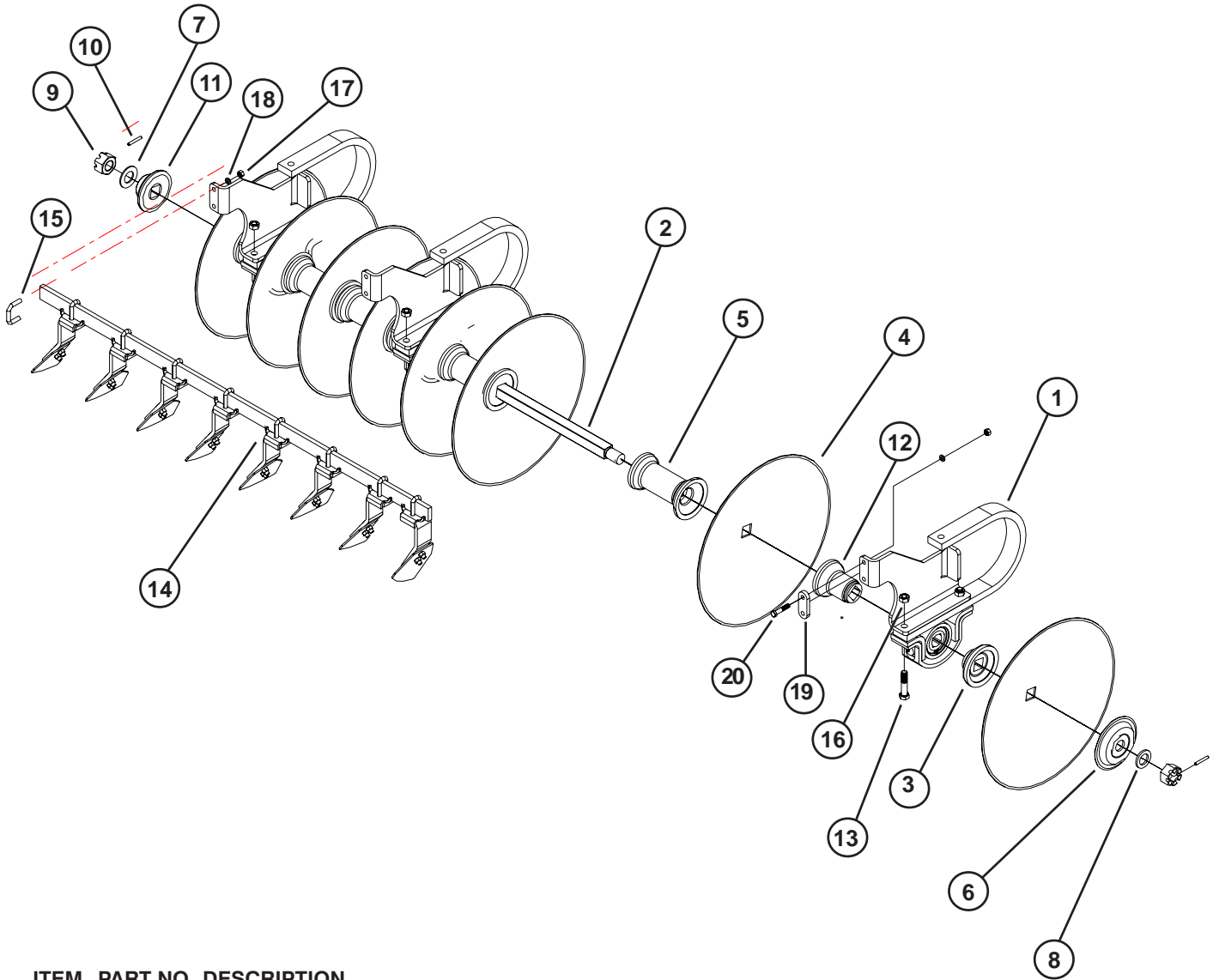
| ITEM | PART NO. | DESCRIPTION |
|------|----------|---|
| | 41233 | 1-3/4" HUB & SPINDLE ASSY (INCLUDES 1-9 & 12-16) |
| 1 | 88301 | PIN COT 3/16DIAx1-1/2 |
| 2 | 16094 | SPINDLE WASHER 7/8ID |
| 3 | 10345 | OUTER BEARING CONE |
| 4 | 30405 | 1-3/4IN PRESSED HUB W/ CUPS |
| 5 | 25586 | WEAR SLEEVE |
| 6 | 10344 | OUTER BEARING CUP |
| 7 | 88263 | FTG GRS 1/8NPT 1610-BL(11/16") |
| 8 | 11379 | INNER BEARING CUP |
| 9 | 25585 | TRIPLE LIP SEAL |
| 10 | 88541 | 1/2NCx3-1/4 GR5 BOLT |
| 11 | 88363 | NUT NEX CENTER LOCK 1/2NC |
| 12 | 41232 | 1-3/4" SPINDLE X 11.12" LONG |
| 13 | 11378 | INNER BEARING CONE |
| 14 | 88142 | WHEEL BOLT 1/2NFx1 (13/16 HEAD) |
| 15 | 88340 | NUT SLTD 7/8NF |
| 16 | 11381 | DUST CAP |

DISK GANG MOUNT



| ITEM | PART NO. | DESCRIPTION |
|------|----------|-----------------------------|
| 1 | 24026 | CLAMP PLATE-TOP STANDARD |
| 2 | 24123 | CLAMP PLATE-BOTTOM STANDARD |
| 3 | 24124 | 7/8"NCx6"x7-1/4" GR5 U-BOLT |
| 4 | 24495 | CLAMP PLATE-WIDE TOP |
| 5 | 25693 | 7/8"NCx6"x6-1/4" GR5 U-BOLT |
| 6 | 25767 | CLAMP PLATE-WIDE BOTTOM |
| 7 | 88341 | 7/8" LOCK WASHER |
| 8 | 88371 | NUT HEX 7/8"NC |

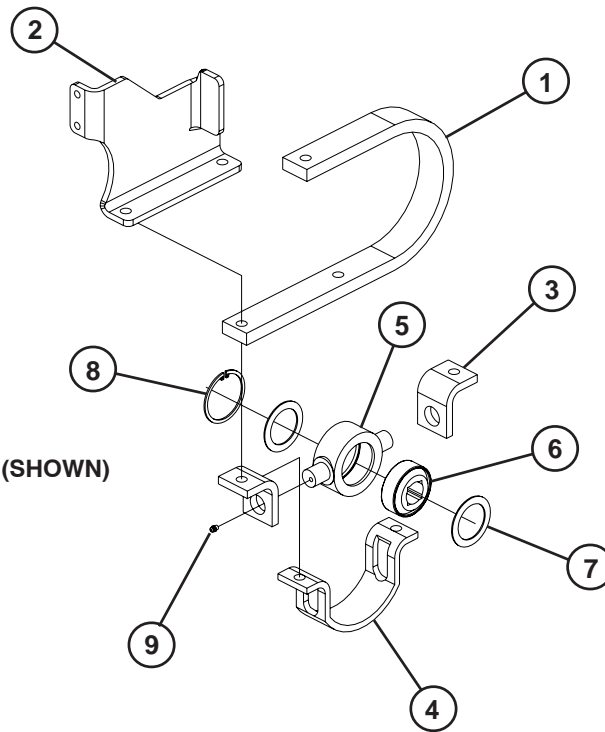
DISK GANG ASSEMBLY



| ITEM | PART NO. | DESCRIPTION |
|------|----------|--------------------------------------|
| 1 | 237249 | STANDARD BEARING ASSEMBLY LH (SHOWN) |
| | 237251 | STANDARD BEARING ASSEMBLY RH |
| 2 | 25718 | 1-1/2" SQ GANG SHAFT 44.08" |
| | 25719 | 1-1/2" SQ GANG SHAFT 53.33" |
| | 25720 | 1-1/2" SQ GANG SHAFT 62.58" |
| | 25721 | 1-1/2" SQ GANG SHAFT 71.83" |
| | 223401 | 1-1/2" SQ GANG SHAFT 34.83" |
| 3 | 25694 | CSTG BGR SHORT 1.50 S 2.2 PT |
| 4 | 25714 | 18" DIA DISK BLADE |
| | 24054 | 20" DIA DISK BLADE |
| | 24278 | 22" DIA DISK BLADE |
| | 24038 | 24" DIA DISK BLADE |
| 5 | 24447 | 9" GANG SPOOL CASTING SQ HOLE |
| 6 | 41065 | 7" DIA SPRING WASHER |
| 7 | 88610 | WSHR FLAT 1-1/2SAE(1-9/16X3)Z |
| 8 | 41066 | 1-1/2" GANG WASHER |
| 9 | 27761 | NUT HVY HEX SLTD. 1-1/2"-6ZP |
| 10 | 88605 | PIN ROLL 5/16"DIA X 2-1/4Z |
| 11 | 25710 | BRNG END CAP 1.5625-2.25 WD |
| 12 | 25695 | SCTG BRG LONG 1.50 S 5.0 PT |

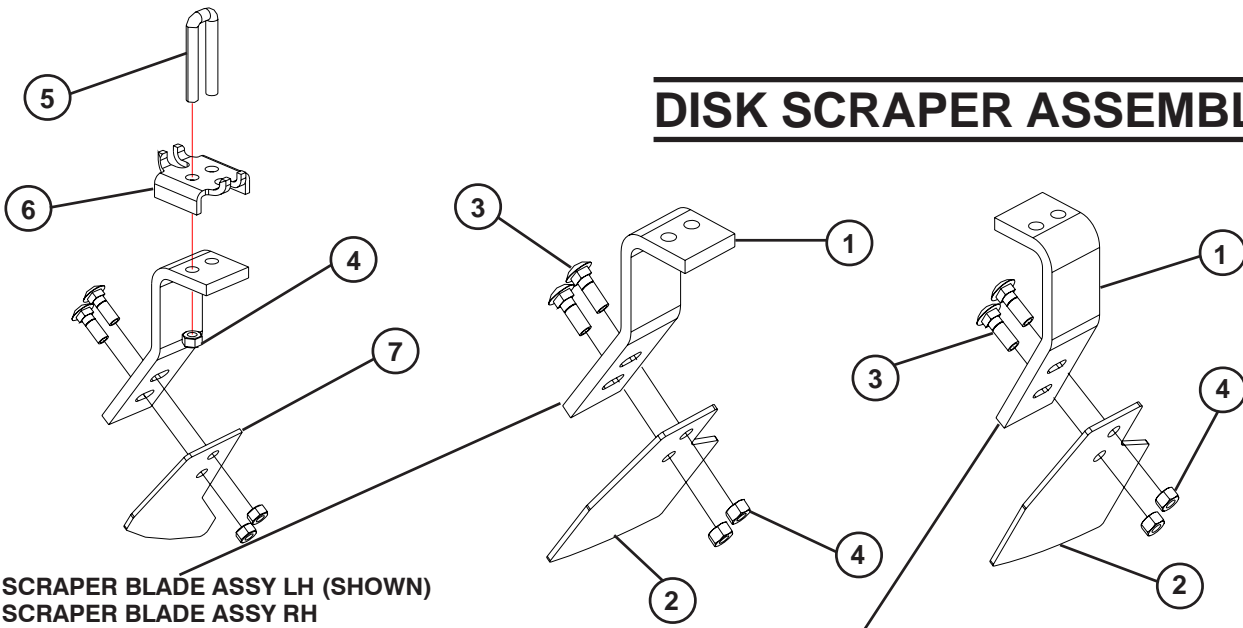
| ITEM | PART NO. | DESCRIPTION |
|------|----------|-----------------------------|
| 13 | 88111 | BLT HEX 3/4"-10NCX3-1/2" 5Z |
| 14 | 240100 | 33" SCRAPER BAR |
| | 223400 | 37" SCRAPER BAR |
| | 240099 | 42-1/4" SCRAPER BAR |
| | 24507 | 45" SCRAPER BAR |
| | 240102 | 49" SCRAPER BAR |
| | 240098 | 51-1/2" SCRAPER BAR |
| | 24461 | 54" SCRAPER BAR |
| | 240103 | 67-1/2" SCRAPER BAR |
| | 239106 | 70" SCRAPER BAR |
| 15 | 24217 | BLT-U 1/2-13NCX2-1/8X1-7/8 |
| 16 | 88611 | NUT NLK 3/4-10NC 5Z |
| 17 | 88104 | NUT HEX 1/2"NC |
| 18 | 88303 | WSHR HLK 1/2ID(9/16ACT) Z |
| 19 | 239105 | 2 HOLE PLATE |
| 20 | 88410 | 1/2-13NCX2-1/2 GR5 |

BEARING ASSEMBLY



237249 DOT STANDARD BEARING ASSEMBLY LH (SHOWN)
237251 DOT STANDARD BEARING ASSEMBLY RH

| ITEM | PART NO. | DESCRIPTION |
|------|----------|--------------------------------|
| 1 | 24354 | SPRING SHANK |
| 2 | 237248 | SCRAPER MOUNT-LH (SHOWN) |
| | 237250 | SCRAPER MOUNT-RH |
| 3 | 24487 | BEARING CLAMP CLIP |
| 4 | 24486 | BEARING CLAMP |
| 5 | 24155 | BEARING CASTING |
| 6 | 242594 | BEARING 1-1/2SQX3.938OD |
| 7 | 24008 | BEARING WASHER |
| 8 | 24210 | BEARING RETAINING RING |
| 9 | 88263 | FTG GRS 1/8NPT 1610-BL(11/16") |



DISK SCRAPER ASSEMBLY

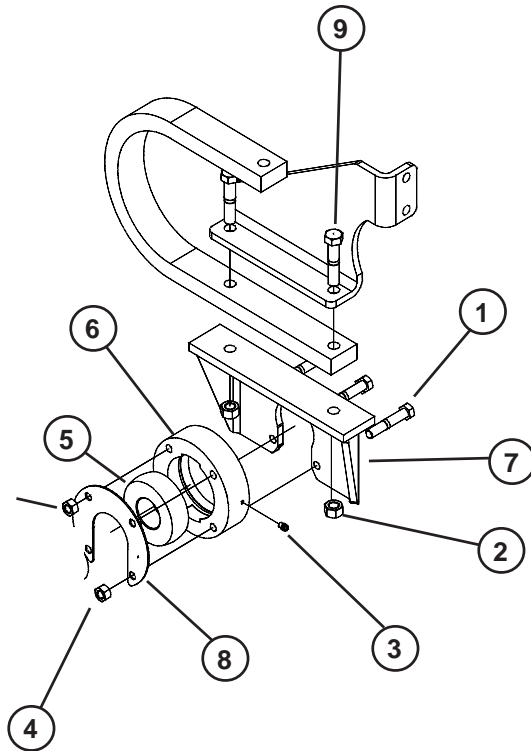
SCRAPER BLADE ASSY LH (SHOWN)
SCRAPER BLADE ASSY RH

| ITEM | PART NO. | DESCRIPTION |
|------|----------|---------------------------------|
| 1 | 24247 | SCRAPER ARM |
| 2 | 24301 | SCRAPER BLADE |
| 3 | 88873 | BLT CRG 1/2-13NCX1-1/2 5Z |
| 4 | 88621 | NUT NLK 1/2-13NC 5Z |
| 5 | 24329 | 1/2"NCx11/16"x3-1/2" GR5 U-BOLT |
| 6 | 27950 | CLIP-SCRAPER ARM |
| 7 | 24302 | SCRAPER BLADE-BEARING STAND |

SCRAPER BLADE ASSY LH OFFSET (SHOWN)
SCRAPER BLADE ASSY RH OFFSET

| ITEM | PART NO. | DESCRIPTION |
|------|----------|---------------------------|
| 1 | 25716 | SCRAPER ARM |
| 2 | 24301 | SCRAPER BLADE |
| 3 | 88873 | BLT CRG 1/2-13NCX1-1/2 5Z |
| 4 | 88621 | NUT NLK 1/2-13NC 5Z |

TEST BEARING ASSEMBLY

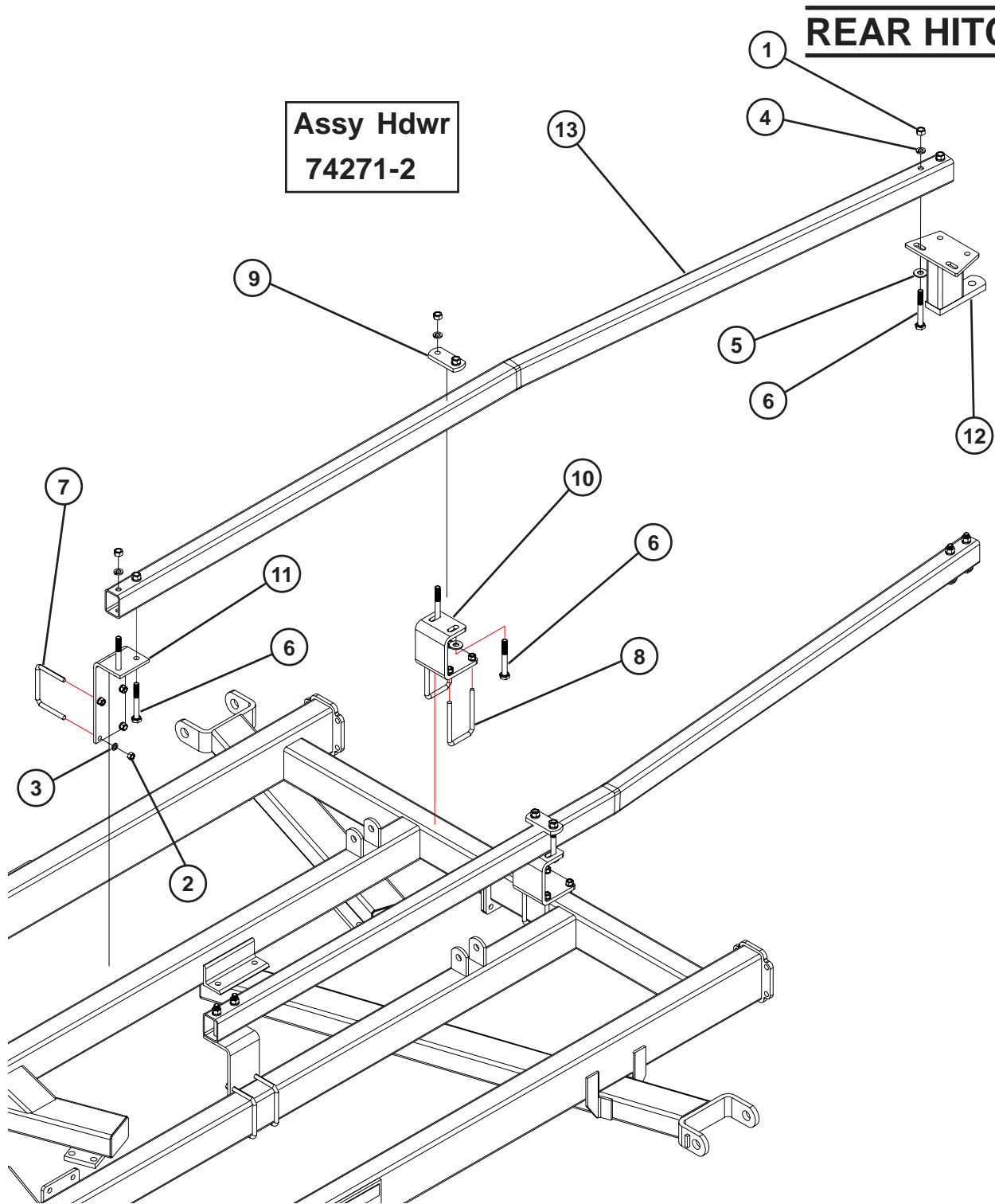


| ITEM | PART NO. | DESCRIPTION |
|------|----------|--------------------|
| 1 | 88507 | 1/2NCx3-1/2 BOLT |
| 2 | 88611 | 3/4NC LOCK NUT |
| 3 | 89318 | GREASE FITING |
| 4 | 88621 | 1/2NC LOCK NUT |
| 5 | 240971 | BEARING (HD) |
| 6 | 222375 | BEARING HOUSING |
| 7 | 222377 | BEARING MOUNT (HD) |
| 8 | 236894 | BEARING GUARD |
| 9 | 88111 | 3/4NCx3-1/2 BOLT |

NOTE: IN THE FALL OF 2007 THESE BEARINGS WERE TESTED ON THREE DISC'S. SERIAL NUMBERS 456485, 455871 AND 456290.

REAR HITCH

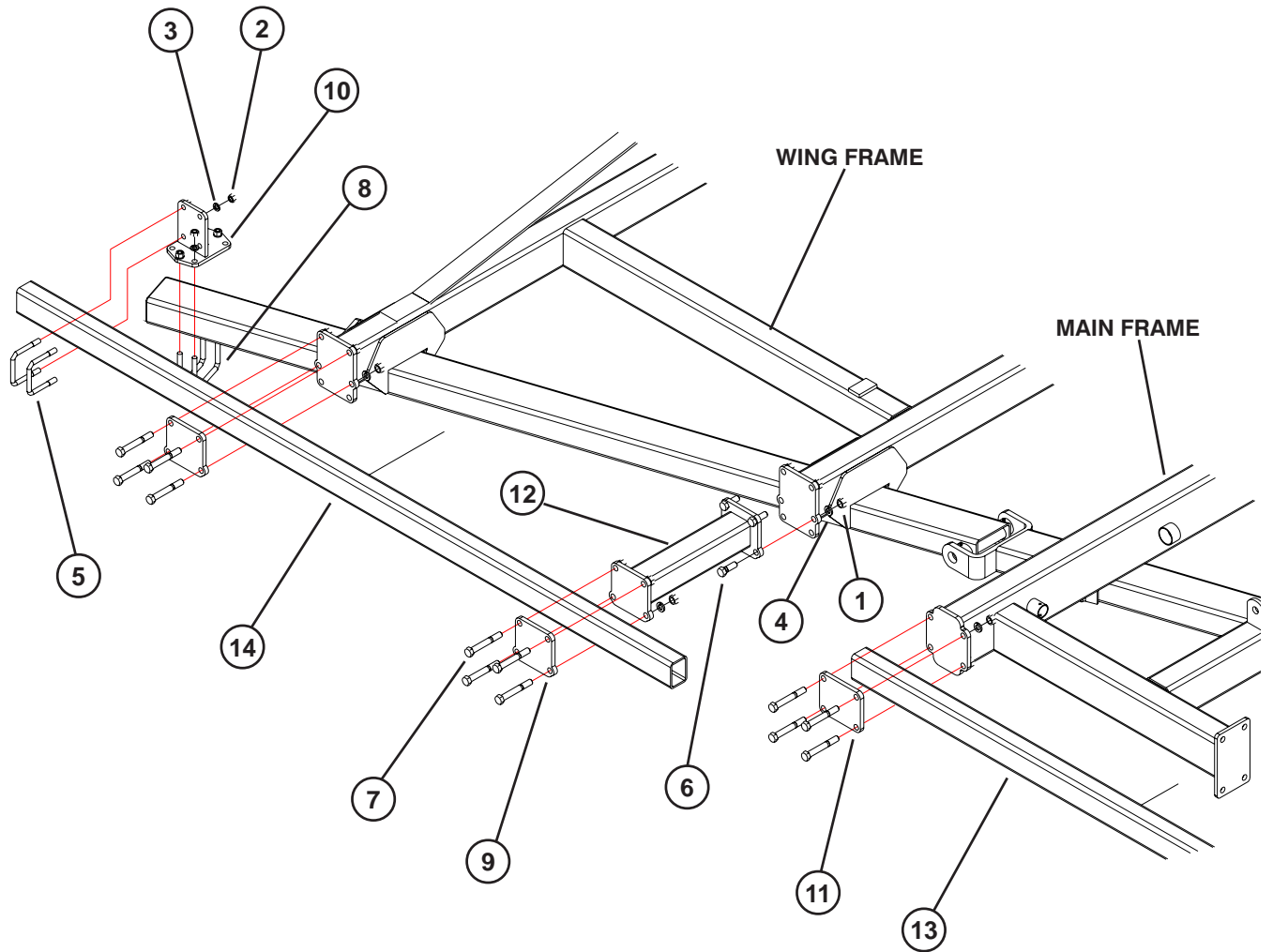
**Assy Hdwr
74271-2**



| ITEM | PART NO. | DESCRIPTION |
|------|----------|-----------------------------|
| 1 | 88110 | NUT HEX 3/4"NC |
| 2 | 88126 | NUT HEX 5/8"NC |
| 3 | 88129 | WSHR HLK 5/8ID(11/16ACT) Z |
| 4 | 88130 | WSHR HLK 3/4ID(13/16ACT) Z |
| 5 | 88131 | FLAT WASHER 3/4" |
| 6 | 88293 | 3/4"NCx6" GR5 HEX BOLT |
| 7 | 89093 | 5/8"NCx6"x5-1/2" GR5 U-BOLT |
| 8 | 89097 | 5/8"NCx4"x7-1/4" GR5 U-BOLT |

| ITEM | PART NO. | DESCRIPTION |
|------|----------|-------------------|
| 9 | 233372 | TUBE STRAP |
| 10 | 233375 | HITCH TUBE MOUNT |
| 11 | 238781 | L-BRACKET |
| 12 | 56808 | TONGUE MOUNT |
| 13 | 238783 | FORMED HITCH TUBE |

HARROW MOUNTING COMPONENTS

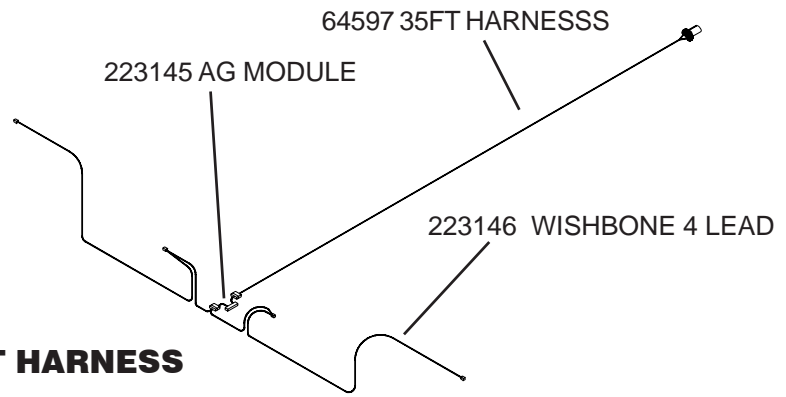


| ITEM | PART NO. | DESCRIPTION |
|------|----------|------------------------------|
| 1 | 88110 | NUT HEX 3/4"NC |
| 2 | 88126 | NUT HEX 5/8"NC |
| 3 | 88129 | WSHR HLK 5/8ID(11/16ACT) Z |
| 4 | 88130 | WSHR HLK 3/4ID(13/16ACT) Z |
| 5 | 88453 | 5/8"NCx4"x4-1/2" GR5 U-BOLT |
| 6 | 88578 | 3/4"NCx2-1/4" GR5 HEX BOLT |
| 7 | 88579 | 3/4"NCx5-1/2" GR5 HEX BOLT |
| 8 | 89093 | 5/8"NCx6"x5-1/2" GR5 U-BOLT |
| 9 | 238703 | 4-HOLE PLATE (5.12"x5.12") |
| 10 | 239156 | HARROW TUBE BRACE |
| 11 | 239158 | 4-HOLE PLATE (7.5"x6.25") |
| 12 | 238773 | STANDOFF TUBE (10.5") |
| | 238772 | STANDOFF TUBE (15.7") |
| | 237291 | STANDOFF TUBE (20.8") |
| 13 | 237299 | 3"x4"x97" TUBE (MAIN FRAME) |
| 14 | 238768 | 3"x4"x84" TUBE (WING FRAME) |
| | 238769 | 3"x4"x102" TUBE (WING FRAME) |
| | 237300 | 3"x4"x120" TUBE (WING FRAME) |

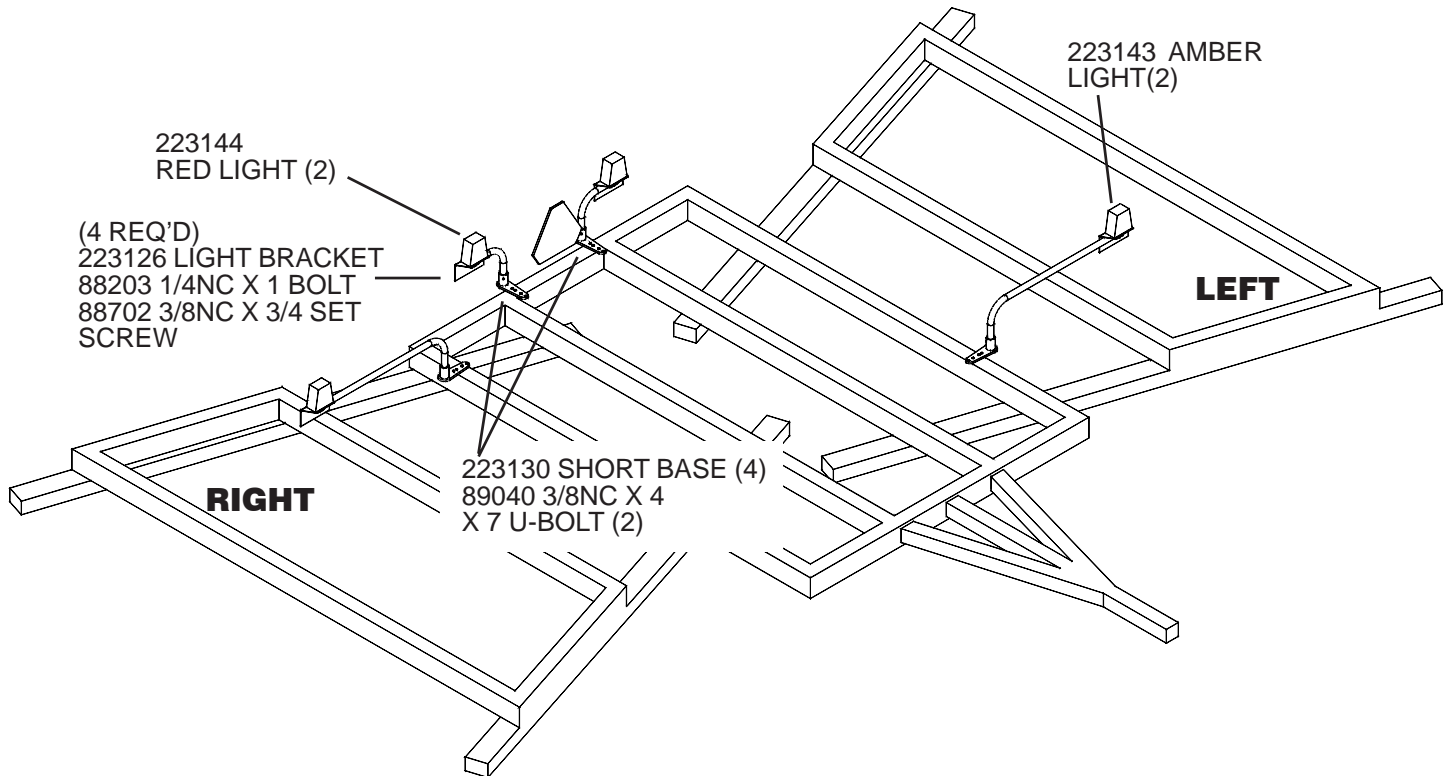
SEE MANUAL 74155 FOR HARROW SECTION ASSEMBLY & PARTS

LIGHTS

NOTE: MOUNT THE RED LIGHTS AS REARWARD AS PRACTICAL ON THE CENTER FRAME. SPACE EVENLY, 2' TO 5' FROM THE MACHINE CENTER.



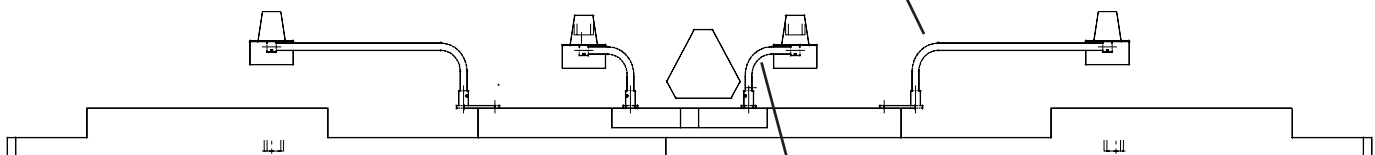
NOTE: ROUTE LIGHT HARNESS THRU LIGHT ARMS



NOTE: MOUNT AMBER LIGHTS AS WIDE AS POSSIBLE. THE AMBER LIGHTS MUST BE MOUNTED NO MORE THAN 16" FROM THE IMPLEMENT EXTREMITIES, WHEN WINGS ARE FOLDED.

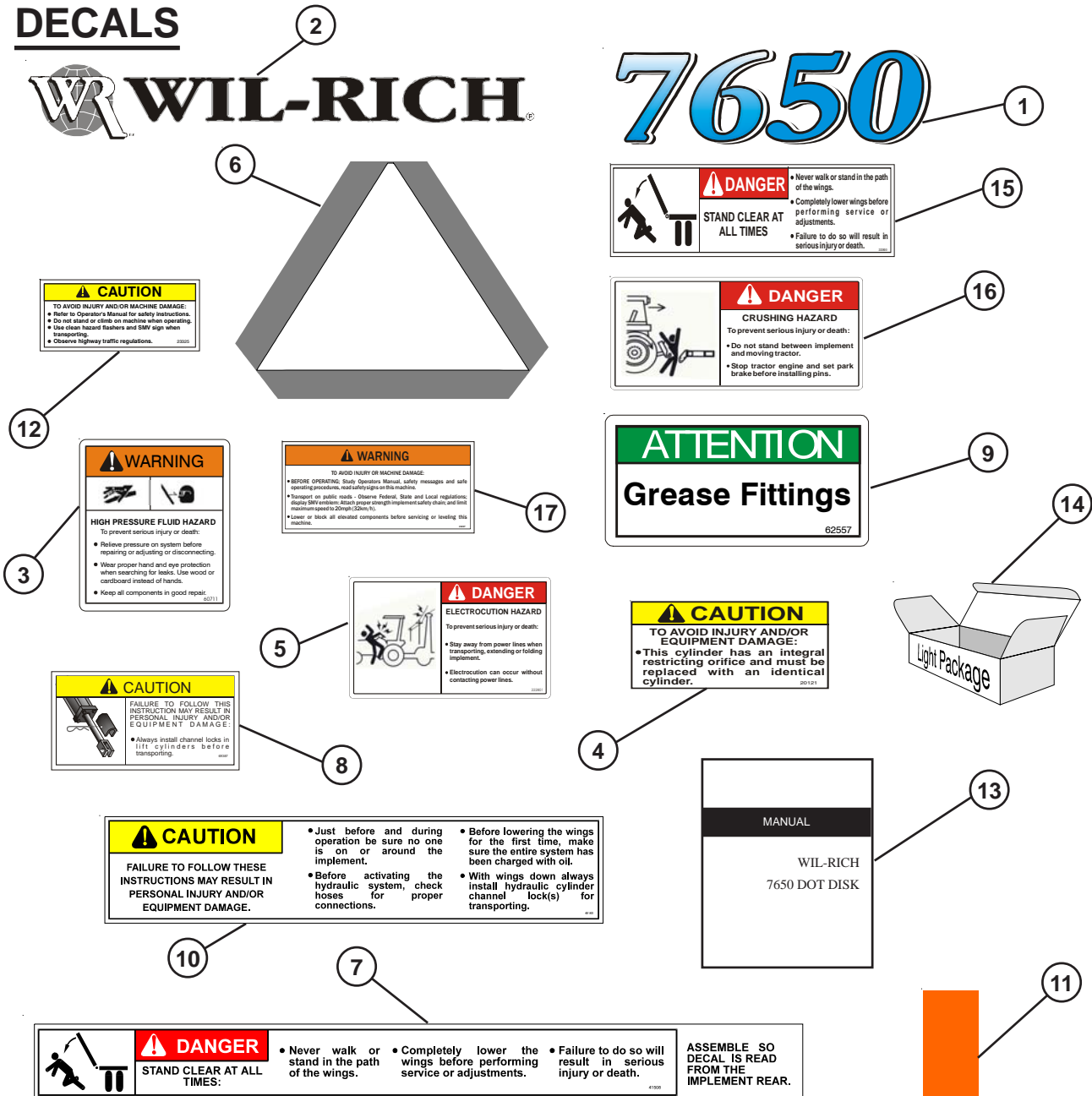
237164 12 X 44 LIGHT ARM (2)
237145 BACKUP PLATE (2)
89418 3/8NC X 9-1/2 (4)

**30"- 100"
CENTERED**



223140 12 X 12 LIGHT ARM (2)

DECALS



| ITEM | PART NO | DESCRIPTION |
|------|---------|---------------------------------|
| 1 | 237274 | 7650 DECAL |
| 2 | 65342 | WIL-RICH DECAL 3-5/8" x 23-7/8" |
| 3 | 60711 | HIGH PRESSURE FLUID HAZARD |
| 4 | 20121 | INTEGRAL RESTRICTOR DECAL |
| 5 | 222801 | ELECTROCUTION DECAL |
| 6 | 41345 | SMV KIT |
| 7 | 41508 | WING LOCK DANGER DECAL |
| 8 | 69387 | CHANNEL LOCK DECAL |
| 9 | 62557 | GREASE FITTING DECAL |

| ITEM | PART NO | DESCRIPTION |
|------|---------|--------------------------------|
| 10 | 49165 | CAUTION DECAL |
| 11 | 22372 | AMBER REFLECTOR |
| 12 | 23325 | CAUTION DECAL - READ |
| 13 | 74255 | 7650 DOT DISK OPERATORS MANUAL |
| 14 | 223811 | CLEARANCE LIGHT PACKAGE |
| 15 | 222800 | DANGER DECAL |
| 16 | 222802 | CRUSHING DECAL |
| 17 | 24227 | WARNING DECAL-OPERATING |